

Nose Tips

IMPORTANT

Nose assemblies do NOT include nose tips. Nose tips must be ordered separately.

A tool (except part number 71401-00039) must always be fitted with the correct nose assembly and nose tip for your fastener and must be ordered separately, refer to the 'NOSE TIPS' tables below and pages 10 and 12.

If your application presents no access restriction use a Type '1' Nose Tip unless you are placing aerospace fasteners which requires a Type '3' Nose Tip.

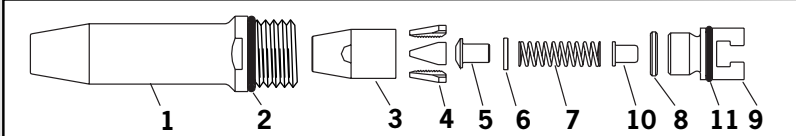
Dimensions 'A' and 'B' below will help you assess the suitability of a particular nose tip.

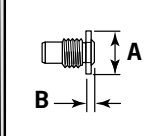
You should also check that the dimensions of the nose casing will not restrict access to your application. If access is restricted Type '2' Nose Tips are available for some fasteners. Refer to the table on page 12.

It is essential that nose assembly and nose tip are compatible with the fastener prior to operating the tool. If you have ordered a 71401-00039 complete tool, it is important that you check that the nose tip already fitted to the nose assembly is the correct one to place your fastener by sliding the fastener stem into the nose tip. No force should be required and play should be minimal.

Swivel heads are available as an alternative to nose assemblies when further reach is required. See pages 14 to 16 in the 'Accessories' section.

TYPE 1 NOSE TIPS			FASTENER		NOSE TIP (mm)			see below																																																																																																																																																																																																																																													
			NAME	Ø ¹	MATERIAL	PART N°	'A'		'B'																																																																																																																																																																																																																																												
¹ In inches then in millimetres. ² Head forming nose tips for use with countersunk heads ONLY. ³ Long nose tip for deep placing. ⁴ Dome head. ⁵ Countersunk.	* Complete tool part number 71401-00039 does not only include the 71213-15000 nose assembly below but also the following three nose tips: 71210-05002, 71210-16070 and 07381-04701 making up a nose assembly kit part number 71401-15100. Use the nose tip listed in the table.	* Items 3-11 available as cartridge assembly 71213-20320	NOSE ASSEMBLY part n° 71213-15000 (+ 3 nose tips above = 71213-15100)	<table border="1"> <thead> <tr> <th>ITEM</th> <th>DESCRIPTION</th> <th>PART N°</th> </tr> </thead> <tbody> <tr><td>1</td><td>TAPERED NOSE CASING</td><td>71213-00350</td></tr> <tr><td>2</td><td>'O' RING</td><td>07003-00067</td></tr> <tr><td>3</td><td>JAW HOUSING - TAPERED</td><td>71210-15902 *</td></tr> <tr><td>4</td><td>JAW</td><td>71210-15001 *</td></tr> <tr><td>5</td><td>JAW SPREADER</td><td>07498-04502 *</td></tr> <tr><td>6</td><td>BUFFER</td><td>71210-05001 *</td></tr> <tr><td>7</td><td>SPRING</td><td>07500-00418 *</td></tr> <tr><td>8</td><td>LOCKING RING</td><td>07340-00327 *</td></tr> <tr><td>9</td><td>JAW SPREADER HOUSING 'T'</td><td>71210-20321 *</td></tr> <tr><td>10</td><td>DETENT SLEEVE</td><td>71210-20322 *</td></tr> <tr><td>11</td><td>'O' RING</td><td>07003-00277 *</td></tr> </tbody> </table>	ITEM	DESCRIPTION	PART N°	1	TAPERED NOSE CASING	71213-00350	2	'O' RING	07003-00067	3	JAW HOUSING - TAPERED	71210-15902 *	4	JAW	71210-15001 *	5	JAW SPREADER	07498-04502 *	6	BUFFER	71210-05001 *	7	SPRING	07500-00418 *	8	LOCKING RING	07340-00327 *	9	JAW SPREADER HOUSING 'T'	71210-20321 *	10	DETENT SLEEVE	71210-20322 *	11	'O' RING	07003-00277 *	AVEX® 1/8 : 3.2 Al Alloy 71210-05002 12.7 4.8 ... 039* 1/8 : 3.2 Steel 71210-16070 12.7 3.3 ... 039* 1/8 : 3.2 Al Alloy 07340-06401 ² 12.7 2.9 ... 003 - : 3.0 Al Alloy 71210-05002 12.7 4.8 ... 039* 5/32 : 4.0 Al Alloy 71210-16070 12.7 3.3 ... 039* 5/32 : 4.0 Steel 07381-04701 12.7 2.8 ... 039* 5/32 : 4.0 Al Alloy 07340-06501 ² 12.7 3.3 ... 009 3/16 : 4.8 Al Alloy 07381-04701 12.7 2.8 ... 039* 3/16 : 4.8 Al Alloy 07340-04800 19.0 3.3 ... 016 3/16 : 4.8 Steel 07490-04401 12.7 3.3 ... 017 3/16 : 4.8 Al Alloy 07340-06601 ² 12.7 4.1 ... 015	<table border="1"> <tbody> <tr><td>MONOBOLT®</td><td>3/16 : 4.8 Any</td><td>71210-16020</td><td>12.7</td><td>4.1</td><td>...</td><td>200</td></tr> <tr><td>BULBEX®</td><td>5/32 : 4.0 Al Alloy</td><td>71210-16070</td><td>12.7</td><td>3.3</td><td>...</td><td>039*</td></tr> <tr><td>BULBEX®</td><td>3/16 : 4.8 Al Alloy</td><td>07381-04701</td><td>12.7</td><td>2.8</td><td>...</td><td>039*</td></tr> <tr><td>KLAMPTITE™KTR</td><td>3/16 : 4.8 Al Alloy</td><td>71220-16060</td><td>12.7</td><td>4.5</td><td>...</td><td>141</td></tr> <tr><td>KLAMPTITE™</td><td>3/16 : 4.8 Al Alloy</td><td>07381-04701</td><td>12.7</td><td>2.8</td><td>...</td><td>039*</td></tr> <tr><td>AVINOX® II</td><td>1/8 : 3.2 Stainless Steel</td><td>71210-16070</td><td>12.7</td><td>3.3</td><td>...</td><td>039*</td></tr> <tr><td>AVINOX® II</td><td>5/32 : 4.0 Stainless Steel</td><td>07381-04701</td><td>12.7</td><td>2.8</td><td>...</td><td>039*</td></tr> <tr><td>AVINOX® II</td><td>3/16 : 4.8 Stainless Steel</td><td>07498-01401</td><td>12.7</td><td>4.8</td><td>...</td><td>082</td></tr> <tr><td>T-LOK®</td><td>- : 4.3 Steel</td><td>07340-06201</td><td>12.7</td><td>3.3</td><td>...</td><td>120</td></tr> <tr><td>T-LOK®</td><td>3/16 : 4.8 Steel</td><td>07340-06201</td><td>12.7</td><td>3.3</td><td>...</td><td>120</td></tr> <tr><td>AVIBULB®</td><td>1/8 : 3.2 Steel</td><td>71210-16070</td><td>12.7</td><td>3.3</td><td>...</td><td>039*</td></tr> <tr><td>AVIBULB®</td><td>5/32 : 4.0 Steel</td><td>07381-04701</td><td>12.7</td><td>2.8</td><td>...</td><td>039*</td></tr> <tr><td>AVIBULB®</td><td>3/16 : 4.8 Steel</td><td>07498-01401</td><td>12.7</td><td>4.8</td><td>...</td><td>082</td></tr> <tr><td>AVDEL® SR</td><td>1/8 : 3.2 Any</td><td>71210-05002</td><td>12.7</td><td>4.8</td><td>...</td><td>039*</td></tr> <tr><td>AVDEL® SR</td><td>5/32 : 4.0 Any</td><td>71210-16070</td><td>12.7</td><td>3.3</td><td>...</td><td>039*</td></tr> <tr><td>AVDEL® SR</td><td>3/16 : 4.8 Any</td><td>07348-07001⁴</td><td>12.7</td><td>5.7</td><td>...</td><td>062</td></tr> <tr><td>AVDEL® SR</td><td>3/16 : 1.8 Any</td><td>71210-16050⁵</td><td>12.7</td><td>5.7</td><td>...</td><td>064</td></tr> <tr><td>INTERLOCK®</td><td>3/16 : 4.8 Any</td><td>07381-04701</td><td>12.7</td><td>2.8</td><td>...</td><td>039*</td></tr> <tr><td>STAVEX®</td><td>1/8 : 3.2 Steel</td><td>71210-16070</td><td>12.7</td><td>3.3</td><td>...</td><td>039*</td></tr> <tr><td>STAVEX®</td><td>5/32 : 4.0 Steel</td><td>07381-04701</td><td>12.7</td><td>2.8</td><td>...</td><td>039*</td></tr> <tr><td>STAVEX®</td><td>3/16 : 4.8 Steel</td><td>07381-04701</td><td>12.7</td><td>2.8</td><td>...</td><td>039*</td></tr> <tr><td>STAVEX®</td><td>3/16 : 4.8 Steel</td><td>07340-04800</td><td>19.0</td><td>3.3</td><td>...</td><td>016</td></tr> <tr><td>STAVEX®</td><td>3/16 : 4.8 Steel</td><td>07381-04701</td><td>12.7</td><td>2.8</td><td>...</td><td>039*</td></tr> <tr><td>STAVEX®</td><td>1/8 : 3.2 Stainless Steel</td><td>71210-16070</td><td>12.7</td><td>3.3</td><td>...</td><td>039*</td></tr> <tr><td>STAVEX®</td><td>5/32 : 4.0 Stainless Steel</td><td>07381-04701</td><td>12.7</td><td>2.8</td><td>...</td><td>039*</td></tr> <tr><td>STAVEX®</td><td>3/16 : 4.8 Stainless Steel</td><td>07381-04701</td><td>12.7</td><td>2.8</td><td>...</td><td>039*</td></tr> <tr><td>Q-RIVET™</td><td>1/8 : 3.2 Any</td><td>71210-05002</td><td>12.7</td><td>4.8</td><td>...</td><td>039*</td></tr> <tr><td>Q-RIVET™</td><td>5/32 : 4.0 Any</td><td>07340-06201</td><td>12.7</td><td>3.3</td><td>...</td><td>120</td></tr> <tr><td>Q-RIVET™</td><td>3/16 : 4.8 Any</td><td>07340-06201</td><td>12.7</td><td>3.3</td><td>...</td><td>120</td></tr> </tbody> </table>	MONOBOLT®	3/16 : 4.8 Any	71210-16020	12.7	4.1	...	200	BULBEX®	5/32 : 4.0 Al Alloy	71210-16070	12.7	3.3	...	039*	BULBEX®	3/16 : 4.8 Al Alloy	07381-04701	12.7	2.8	...	039*	KLAMPTITE™KTR	3/16 : 4.8 Al Alloy	71220-16060	12.7	4.5	...	141	KLAMPTITE™	3/16 : 4.8 Al Alloy	07381-04701	12.7	2.8	...	039*	AVINOX® II	1/8 : 3.2 Stainless Steel	71210-16070	12.7	3.3	...	039*	AVINOX® II	5/32 : 4.0 Stainless Steel	07381-04701	12.7	2.8	...	039*	AVINOX® II	3/16 : 4.8 Stainless Steel	07498-01401	12.7	4.8	...	082	T-LOK®	- : 4.3 Steel	07340-06201	12.7	3.3	...	120	T-LOK®	3/16 : 4.8 Steel	07340-06201	12.7	3.3	...	120	AVIBULB®	1/8 : 3.2 Steel	71210-16070	12.7	3.3	...	039*	AVIBULB®	5/32 : 4.0 Steel	07381-04701	12.7	2.8	...	039*	AVIBULB®	3/16 : 4.8 Steel	07498-01401	12.7	4.8	...	082	AVDEL® SR	1/8 : 3.2 Any	71210-05002	12.7	4.8	...	039*	AVDEL® SR	5/32 : 4.0 Any	71210-16070	12.7	3.3	...	039*	AVDEL® SR	3/16 : 4.8 Any	07348-07001 ⁴	12.7	5.7	...	062	AVDEL® SR	3/16 : 1.8 Any	71210-16050 ⁵	12.7	5.7	...	064	INTERLOCK®	3/16 : 4.8 Any	07381-04701	12.7	2.8	...	039*	STAVEX®	1/8 : 3.2 Steel	71210-16070	12.7	3.3	...	039*	STAVEX®	5/32 : 4.0 Steel	07381-04701	12.7	2.8	...	039*	STAVEX®	3/16 : 4.8 Steel	07381-04701	12.7	2.8	...	039*	STAVEX®	3/16 : 4.8 Steel	07340-04800	19.0	3.3	...	016	STAVEX®	3/16 : 4.8 Steel	07381-04701	12.7	2.8	...	039*	STAVEX®	1/8 : 3.2 Stainless Steel	71210-16070	12.7	3.3	...	039*	STAVEX®	5/32 : 4.0 Stainless Steel	07381-04701	12.7	2.8	...	039*	STAVEX®	3/16 : 4.8 Stainless Steel	07381-04701	12.7	2.8	...	039*	Q-RIVET™	1/8 : 3.2 Any	71210-05002	12.7	4.8	...	039*	Q-RIVET™	5/32 : 4.0 Any	07340-06201	12.7	3.3	...	120	Q-RIVET™	3/16 : 4.8 Any	07340-06201	12.7	3.3	...	120
					ITEM	DESCRIPTION	PART N°																																																																																																																																																																																																																																														
					1	TAPERED NOSE CASING	71213-00350																																																																																																																																																																																																																																														
					2	'O' RING	07003-00067																																																																																																																																																																																																																																														
					3	JAW HOUSING - TAPERED	71210-15902 *																																																																																																																																																																																																																																														
					4	JAW	71210-15001 *																																																																																																																																																																																																																																														
					5	JAW SPREADER	07498-04502 *																																																																																																																																																																																																																																														
					6	BUFFER	71210-05001 *																																																																																																																																																																																																																																														
					7	SPRING	07500-00418 *																																																																																																																																																																																																																																														
					8	LOCKING RING	07340-00327 *																																																																																																																																																																																																																																														
					9	JAW SPREADER HOUSING 'T'	71210-20321 *																																																																																																																																																																																																																																														
10	DETENT SLEEVE	71210-20322 *																																																																																																																																																																																																																																																			
11	'O' RING	07003-00277 *																																																																																																																																																																																																																																																			
MONOBOLT®	3/16 : 4.8 Any	71210-16020	12.7	4.1	...	200																																																																																																																																																																																																																																															
BULBEX®	5/32 : 4.0 Al Alloy	71210-16070	12.7	3.3	...	039*																																																																																																																																																																																																																																															
BULBEX®	3/16 : 4.8 Al Alloy	07381-04701	12.7	2.8	...	039*																																																																																																																																																																																																																																															
KLAMPTITE™KTR	3/16 : 4.8 Al Alloy	71220-16060	12.7	4.5	...	141																																																																																																																																																																																																																																															
KLAMPTITE™	3/16 : 4.8 Al Alloy	07381-04701	12.7	2.8	...	039*																																																																																																																																																																																																																																															
AVINOX® II	1/8 : 3.2 Stainless Steel	71210-16070	12.7	3.3	...	039*																																																																																																																																																																																																																																															
AVINOX® II	5/32 : 4.0 Stainless Steel	07381-04701	12.7	2.8	...	039*																																																																																																																																																																																																																																															
AVINOX® II	3/16 : 4.8 Stainless Steel	07498-01401	12.7	4.8	...	082																																																																																																																																																																																																																																															
T-LOK®	- : 4.3 Steel	07340-06201	12.7	3.3	...	120																																																																																																																																																																																																																																															
T-LOK®	3/16 : 4.8 Steel	07340-06201	12.7	3.3	...	120																																																																																																																																																																																																																																															
AVIBULB®	1/8 : 3.2 Steel	71210-16070	12.7	3.3	...	039*																																																																																																																																																																																																																																															
AVIBULB®	5/32 : 4.0 Steel	07381-04701	12.7	2.8	...	039*																																																																																																																																																																																																																																															
AVIBULB®	3/16 : 4.8 Steel	07498-01401	12.7	4.8	...	082																																																																																																																																																																																																																																															
AVDEL® SR	1/8 : 3.2 Any	71210-05002	12.7	4.8	...	039*																																																																																																																																																																																																																																															
AVDEL® SR	5/32 : 4.0 Any	71210-16070	12.7	3.3	...	039*																																																																																																																																																																																																																																															
AVDEL® SR	3/16 : 4.8 Any	07348-07001 ⁴	12.7	5.7	...	062																																																																																																																																																																																																																																															
AVDEL® SR	3/16 : 1.8 Any	71210-16050 ⁵	12.7	5.7	...	064																																																																																																																																																																																																																																															
INTERLOCK®	3/16 : 4.8 Any	07381-04701	12.7	2.8	...	039*																																																																																																																																																																																																																																															
STAVEX®	1/8 : 3.2 Steel	71210-16070	12.7	3.3	...	039*																																																																																																																																																																																																																																															
STAVEX®	5/32 : 4.0 Steel	07381-04701	12.7	2.8	...	039*																																																																																																																																																																																																																																															
STAVEX®	3/16 : 4.8 Steel	07381-04701	12.7	2.8	...	039*																																																																																																																																																																																																																																															
STAVEX®	3/16 : 4.8 Steel	07340-04800	19.0	3.3	...	016																																																																																																																																																																																																																																															
STAVEX®	3/16 : 4.8 Steel	07381-04701	12.7	2.8	...	039*																																																																																																																																																																																																																																															
STAVEX®	1/8 : 3.2 Stainless Steel	71210-16070	12.7	3.3	...	039*																																																																																																																																																																																																																																															
STAVEX®	5/32 : 4.0 Stainless Steel	07381-04701	12.7	2.8	...	039*																																																																																																																																																																																																																																															
STAVEX®	3/16 : 4.8 Stainless Steel	07381-04701	12.7	2.8	...	039*																																																																																																																																																																																																																																															
Q-RIVET™	1/8 : 3.2 Any	71210-05002	12.7	4.8	...	039*																																																																																																																																																																																																																																															
Q-RIVET™	5/32 : 4.0 Any	07340-06201	12.7	3.3	...	120																																																																																																																																																																																																																																															
Q-RIVET™	3/16 : 4.8 Any	07340-06201	12.7	3.3	...	120																																																																																																																																																																																																																																															





**COMPLETE TOOL
PART NUMBER :**
precede with 71401-00.

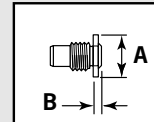
Nose Tips

AVSEAL®II NOSE TIPS

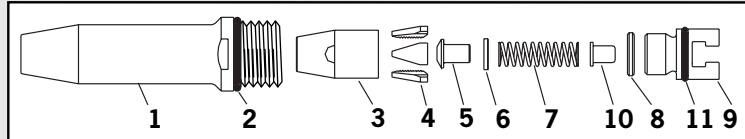
NAME	FASTENER			NOSE TIP (mm)			see below	
	Ø ¹		MATERIAL	PART N°	'A'	'B'		
AVSEAL®II	5/32	4.0	Standard Al. Alloy - Flush Nose Tip	71213-16100	71210-16102	12.7	2.5	... 401
	5/32	4.0	Standard Al. Alloy - 2mm Extended Nose Tip	71213-16100	71210-16106	12.7	5.4	... 402
	5/32	4.0	Standard Al. Alloy - 8mm Extended Nose Tip	71213-16100	71210-16110	12.7	11.4	... 403
	-	5.0	Standard Al. Alloy - Flush Nose Tip	71213-16100	71210-16103	12.7	2.5	... 404
	-	5.0	Standard Al. Alloy - 2mm Extended Nose Tip	71213-16100	71210-16107	12.7	5.4	... 405
	-	5.0	Standard Al. Alloy - 8mm Extended Nose Tip	71213-16100	71210-16111	12.7	11.4	... 406
	-	6.0	Standard Al. Alloy - Flush Nose Tip	71213-16100	71210-16104	12.7	2.5	... 407
	-	6.0	Standard Al. Alloy - 2mm Extended Nose Tip	71213-16100	71210-16108	12.7	5.4	... 408
	-	6.0	Standard Al. Alloy - 8mm Extended Nose Tip	71213-16100	71210-16112	12.7	11.4	... 409
	-	6.5	Standard Al. Alloy - Flush Nose Tip	71213-16100	71210-16114	12.7	2.5	... 413
	-	6.5	Standard Al. Alloy - 2mm Extended Nose Tip	71213-16100	71210-16115	12.7	5.4	... 414
	-	6.5	Standard Al. Alloy - 8mm Extended Nose Tip	71213-16100	71210-16116	12.7	11.4	... 415
	-	7.0	Standard Al. Alloy - Flush Nose Tip	71213-16100	71210-16105	12.7	2.5	... 410
	-	7.0	Standard Al. Alloy - 2mm Extended Nose Tip	71213-16100	71210-16109	12.7	5.4	... 411
	-	7.0	Standard Al. Alloy - 8mm Extended Nose Tip	71213-16100	71210-16113	12.7	11.4	... 412

NOSE ASSEMBLY part n° 71213-16100

ITEM	DESCRIPTION	PART N°
1	TAPERED NOSE CASING	71213-00350
2	'O' RING	07003-00067
3	JAW HOUSING - TAPERED	71210-15902 *
4	JAW	71210-16101 *
5	JAW SPREADER	07498-04502 *
6	BUFFER	71210-05001 *
7	SPRING	07500-00418 *
8	LOCKING RING	07340-00327 *
9	JAW SPREADER HOUSING 'T'	71210-20321 *
10	DETENT SLEEVE	71210-20322 *
11	'O' RING	07003-00277 *



**COMPLETE TOOL
PART NUMBER :**
precede with 71401-00.



* Items 3-11 available as cartridge
assembly 71213-16320

Nose Tips

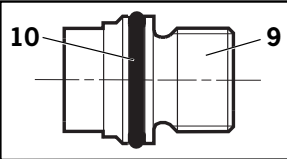
TYPE 2 NOSE TIPS

NAME	FASTENER		NOSE TIP (mm)			see below
	\varnothing^1	MATERIAL	PART N°	'A'	'B'	
AVEX®	1/8	3.2 Aluminium Alloy	07340-02805	9.5	12.95	... 002
	1/8	3.2 Steel	07340-02806	9.5	11.4	... 008
	5/32	4.0 Aluminium Alloy	07340-02806	9.5	11.4	... 008
	5/32	4.0 Steel	07340-02807	12.7	10.0	... 014
	3/16	4.8 Aluminium Alloy	07340-02807	12.7	10.0	... 014
	3/16	4.8 Steel	07340-07301	12.7	11.8	... 018
BULBEX®	5/32	4.0 Aluminium Alloy	07340-02806	9.5	11.4	... 008
	3/16	4.8 Aluminium Alloy	07340-02807	12.7	10.0	... 014
T-LOK®	-	4.3 Steel	07241-07101	12.7	10.0	... 121
	3/16	4.8 Steel	07241-07101	12.7	10.0	... 121
STAVEX®	1/8	3.2 Steel	07340-02806	9.5	11.4	... 008
	5/32	4.0 Steel	07340-02807	12.7	10.0	... 014
	3/16	4.8 Steel	07340-02807	12.7	10.0	... 014
	1/8	3.2 Stainless Steel	07340-02806	9.5	11.4	... 008
	5/32	4.0 Stainless Steel	07340-02807	12.7	10.0	... 014
	3/16	4.8 Stainless Steel	07340-02807	12.7	10.0	... 014
AVIBULB®	1/8	3.2 Steel	07340-02806	9.5	11.4	... 008
	5/32	4.0 Steel	07340-02807	12.7	10.0	... 014
ETR	-	5.2 Steel/Brass	07340-02807	12.7	10.0	... 014

¹ In inches then in millimetres.

TYPE 2 NOSE TIPS ARE EXTENDED TO ALLOW ACCESS INTO APPLICATIONS WHERE TYPE 1 NOSE TIPS WILL NOT REACH.

COMPLETE TOOL PART NUMBER:
precede with 71401-00



Remove Male 'T' Adaptor **1** from the Tool (see page 11) and replace with Jaw Spreader Housing **9*** (71210-02101) and 'O' Ring **10***.

TYPE 3 NOSE TIPS

NOSE ASSEMBLY
part n° 71210-15300

ITEM	DESCRIPTION	PART N°
1	NOSE CASING	07344-02001
2	'O' RING	07003-00067
3	JAW HOUSING	07340-00304
4	JAWS	71210-15001
5	JAW SPREADER	07498-04502
6	BUFFER	71210-05001
7	SPRING	07500-00418
8	LOCKING RING	07340-00327
9	JAW SPREADER HOUSING	71210-02101
10	'O' RING	07003-00277

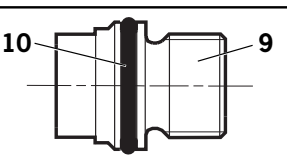
TYPE 3 NOSE TIPS ARE SPECIFICALLY FOR THE AEROSPACE FASTENERS LISTED BELOW.

NAME	FASTENER		NOSE TIP (mm)			see below
	\varnothing^1	MATERIAL	PART N°	'A'	'B'	
AVDEL®	1/8	3.2 Al Alloy	71210-16030	12.7	2.5	... 283
	1/8	3.2 Al Alloy O	71210-16031	12.7	2.5	... 284
	1/8	3.2 Stainless Steel	71210-16032	12.7	3.3	... 285
	5/32	4.0 Al Alloy	71210-16033	12.7	2.5	... 288
	5/32	4.0 Al Alloy O	71210-16034	12.7	2.5	... 289
	5/32	4.0 Stainless Steel	71210-16035	12.7	3.3	... 290
	3/16	4.8 Al Alloy	71210-16036	12.7	2.5	... 293
	3/16	4.8 Al Alloy O	71210-16037	12.7	2.5	... 294
MBC®	1/8	3.2 Any	07340-06701	12.7	4.8	... 300
	5/32	4.0 Any	07340-06801	12.7	5.0	... 305
	3/16	4.8 Al Alloy	07340-06901	12.7	5.1	... 310
MBC®L/C	1/8	3.2 Any	07344-04701	12.7	4.6	... 320
	5/32	4.0 Any	07344-04701	12.7	4.6	... 320
	3/16	4.8 Al Alloy	07344-04701	12.7	4.6	... 320

¹ In inches then in millimetres. **O** Oversize

TYPE 3 NOSE TIPS ARE SPECIFICALLY FOR THE AEROSPACE FASTENERS LISTED BELOW.

COMPLETE TOOL PART NUMBER:
precede with 71401-00



Remove Male 'T' Adaptor **1** from the Tool (see page 11) and replace with Jaw Spreader Housing **9*** (71210-02101) and 'O' Ring **10***.

9* and **10*** refer to the illustrations on this page.

Accessories

Swivel Heads

Instead of a nose assembly, a swivel head can be fitted to a base tool. It allows 360° rotation of the tool about the nose tip and allows access into many applications otherwise too restrictive. There are two types of swivel heads: the straight swivel head with the nose tip slightly offset from the centre line of the tool head and the right-angle swivel head with the nose tip on a perpendicular axis to the head of the tool. See drawings below and page 15 for dimensions and page 16 for details.

IMPORTANT

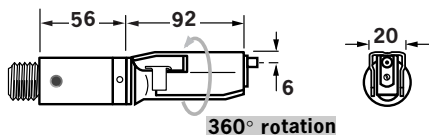
PRIOR to fitting a swivel head, the base tool must be adapted. See Preparing the Base Tool page 15. In contrast to nose assemblies part numbers of swivel heads do INCLUDE a nose tip as shown below.

Swivel heads can be ordered on their own or supplied with a base tool. See table below for part numbers. Jaws and nose tips vary depending on the fastener to be placed but all other components remain the same within each type of swivel head. See the 'capability' tables below and page 15, 'Constant Components' table page 17.

'A' and 'B' dimensions will help you assess the accessibility of your application.

STRAIGHT SWIVEL HEAD capability

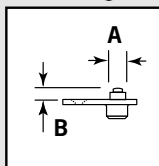
NAME	FASTENER		SWIVEL HEAD PART N°	NOSE TIP (mm)		JAWS PART N°	see below
	Ø ¹	MATERIAL		PART N°	'A'		
AVEX®	1/8	3.2 Al Alloy	07345-03000	07345-03600	7.87	3.81	07340-00213 ... 001
	1/8	3.2 Steel	07345-03100	07345-03700	7.87	3.81	07340-00213 ... 004
	5/32	4.0 Al Alloy	07345-03100	07345-03700	7.87	3.81	07340-00213 ... 004
	5/32	4.0 Steel	07345-03200	07345-03800	7.87	3.81	07490-04602 ... 010
	3/16	4.8 Al Alloy	07345-03200	07345-03800	7.87	3.81	07490-04602 ... 010
BULBEX®	5/32	4.0 Al Alloy	07345-03100	07345-03700	7.87	3.81	07340-00213 ... 004
	3/16	4.8 Al Alloy	07345-03200	07345-03800	7.87	3.81	07490-04602 ... 010
AVINOX® II	1/8	3.2 Stainless Steel	07345-03100	07345-03700	7.87	3.81	07340-00213 ... 004
	5/32	4.0 Stainless Steel	07345-03200	07345-03800	7.87	3.81	07490-04602 ... 010
AVSEAL® II	-	4 Al Alloy	71213-06000	71213-16401	6.35	1.95	07340-00213 ... 160
	-	4 Al Alloy	71213-06600	71213-16402 ²	6.35	4.11	07340-00213 ... 180
	-	5 Al Alloy	71213-06100	71213-16403	7.62	2.00	07340-00213 ... 161
	-	5 Al Alloy	71213-06700	71213-16404 ²	7.62	4.11	07340-00213 ... 181
AVDEL®	1/8	3.2 Al Alloy	07345-03300	07345-03301	5.08	1.17	07340-00229 ... 283
	1/8	3.2 Al Alloy O	07494-03600	07494-03601	5.08	1.17	07340-00229 ... 284
	1/8	3.2 Stainless Steel	07494-03000	07494-03011	5.08	3.81	07340-00213 ... 285
	5/32	4.0 Al Alloy	07345-03400	07345-03401	6.6	0.84	07340-00229 ... 288
	5/32	4.0 Al Alloy O	07494-03700	07494-03701	6.6	0.84	07340-00229 ... 289
	3/16	4.8 Al Alloy	07345-03500	07345-03501	8.13	0.25	07498-04401 ... 293
MBC®	1/8	3.2 Al Alloy	07345-04000	07165-00701	4.75	1.9	07340-00229 ... 300
	5/32	4.0 Al Alloy	07345-04100	07165-00702	6.35	2.36	07340-00229 ... 305
	3/16	4.8 Al Alloy	07345-04200	07165-00703	7.92	2.46	07498-04401 ... 310
MBC®L/C	1/8	3.2 Al Alloy	07345-04700	07345-04701	7.87	2.03	07340-00229 ... 320
	5/32	4.0 Al Alloy	07345-04700	07345-04701	7.87	2.03	07340-00229 ... 320
	5/32	4.0 Al Alloy O	07345-04800	07345-04701	7.87	2.03	07498-04401 ... 327
	3/16	4.8 Al Alloy	07345-04800	07345-04701	7.87	2.03	07498-04401 ... 327
STAVEX®	1/8	3.2 Steel	07345-03100	07345-03700	7.87	3.81	07340-00213 ... 004
	5/32	4.0 Steel	07345-03200	07345-03800	7.87	3.81	07490-04602 ... 010
	1/8	3.2 Stainless Steel	07345-03100	07345-03700	7.87	3.81	07340-00213 ... 004
	5/32	4.0 Stainless Steel	07345-03200	07345-03800	7.87	3.81	07490-04602 ... 010



¹ In inches then in millimetres.

² Long nose tip for deep placing.

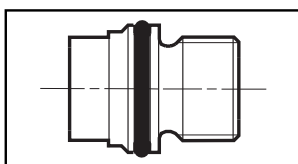
O Oversize



COMPLETE TOOL PART NUMBER :

precede with 71401-30
(the stop nut and safety cap are included)

IMPORTANT: in contrast to complete tools with nose assemblies, those fitted with swivel heads include the nose tip as a part of the head.



Remove Male 'T' Adaptor **1** from the Tool (see page 11) and replace with Jaw Spreader Housing (71210-02101).

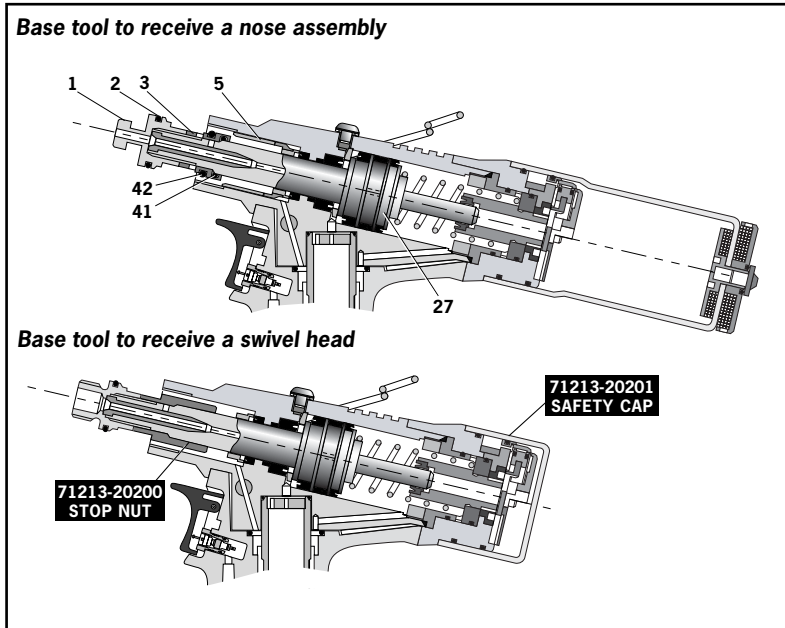
Accessories

Preparing the Base Tool for Right-Angle and Straight Swivel Head Attachment

- Disconnect the air supply.
- Remove any nose assembly items.
- Remove Stem Collector Bottle Assembly **20** (71213-03800).
- Replace assembly **20** with Safety Cap (71213-20201)
- Unscrew Male 'T' Adaptor **1** and remove with 'O' Ring **2**, Locknut **3**, 'O' Rings **42** and **41**, and Seal Housing **5**. Do not refit these items.
- Screw Stop Nut (71213-20200) onto the front of Head Piston **27** as far as it will go by hand.
- Fit Jaw Spreader Housing (71210-02101) and 'O' Ring **2**, tighten onto Head Piston **27**, finally tighten Stop Nut against Jaw Spreader Housing.

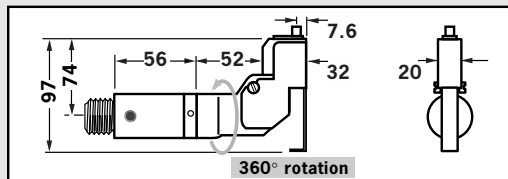
The tool is now ready to be fitted with a swivel head. Instructions page 16.

Item numbers in **bold** refer to the general assembly drawing and parts list on pages 26-27.

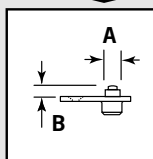


RIGHT-ANGLE SWIVEL HEAD capability

NAME	FASTENER		SWIVEL HEAD PART N°	NOSE TIP (mm)		JAWS PART N°	see below
	Ø ¹	MATERIAL		PART N°	'A'		
AVEX®	1/8 :3.2	Aluminium Alloy	07346-03000	07345-03600	7.87	3.81	07340-00213 ... 001
	1/8 :3.2	Steel	07346-03100	07345-03700	7.87	3.81	07340-00213 ... 004
	5/32 :4.0	Aluminium Alloy	07346-03100	07345-03700	7.87	3.81	07340-00213 ... 004
	5/32 :4.0	Steel	07346-03200	07345-03800	7.87	3.81	07490-04602 ... 010
	3/16 :4.8	Aluminium Alloy	07346-03200	07345-03800	7.87	3.81	07490-04602 ... 010
BULBEX®	5/32 :4.0	Aluminium Alloy	07346-03100	07345-03700	7.87	3.81	07340-00213 ... 004
	3/16 :4.8	Aluminium Alloy	07346-03200	07345-03800	7.87	3.81	07490-04602 ... 010
AVINOX® II	1/8 :3.2	Stainless Steel	07346-03100	07345-03700	7.87	3.81	07340-00213 ... 004
	5/32 :4.0	Stainless Steel	07346-03200	07345-03800	7.87	3.81	07490-04602 ... 010
AVSEAL® II	-	4 Aluminium Alloy	71213-04000	71213-16401	6.35	1.95	07340-00213 ... 160
	-	4 Aluminium Alloy	71213-04700	71213-16402 ²	6.35	4.11	07340-00213 ... 180
	-	5 Aluminium Alloy	71213-04100	71213-16403	7.62	2.00	07340-00213 ... 161
	-	5 Aluminium Alloy	71213-04800	71213-16404 ²	7.62	4.11	07340-00213 ... 181
STAVEX®	1/8 :3.2	Steel	07346-03100	07345-03700	7.87	3.81	07340-00213 ... 004
	5/32 :4.0	Steel	07346-03200	07345-03800	7.87	3.81	07490-04602 ... 010
	1/8 :3.2	Stainless Steel	07346-03100	07345-03700	7.87	3.81	07340-00213 ... 004
	5/32 :4.0	Stainless Steel	07346-03200	07345-03800	7.87	3.81	07490-04602 ... 010
AVDEL®	1/8 :3.2	Aluminium Alloy	07346-03300	07345-03301	5.08	1.17	07340-00229 ... 283
	1/8 :3.2	Aluminium Alloy O	07495-03600	07494-03601	5.08	1.17	07340-00229 ... 284
	1/8 :3.2	Stainless Steel	07495-03000	07494-03011	5.08	3.81	07340-00213 ... 285
	5/32 :4.0	Aluminium Alloy	07346-03400	07345-03401	6.6	0.84	07340-00229 ... 288
	5/32 :4.0	Aluminium Alloy O	07495-03700	07494-03701	6.6	0.84	07340-00229 ... 289
	3/16 :4.8	Aluminium Alloy	07346-03500	07345-03501	8.13	0.25	07498-04401 ... 293
MBC®	1/8 :3.2	Aluminium Alloy	07346-04000	07165-00701	4.75	1.9	07340-00229 ... 300
	5/32 :4.0	Aluminium Alloy	07346-04100	07165-00702	6.35	2.36	07340-00229 ... 305
	3/16 :4.8	Aluminium Alloy	07346-04200	07165-00703	7.92	2.46	07498-04401 ... 310
MBC®L/C	1/8 :3.2	Aluminium Alloy	07346-04500	07345-04701	7.87	2.03	07340-00229 ... 320
	5/32 :4.0	Aluminium Alloy	07346-04500	07345-04701	7.87	2.03	07340-00229 ... 320
	5/32 :4.0	Aluminium Alloy O	07346-04600	07345-04701	7.87	2.03	07498-04401 ... 327
	3/16 :4.8	Aluminium Alloy	07346-04600	07345-04701	7.87	2.03	07498-04401 ... 327



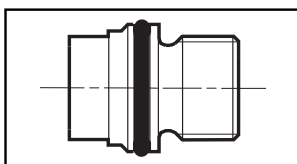
¹ In inches then in millimetres. ² Long nose tip for deep placing.



O Oversize

COMPLETE TOOL PART NUMBER :
precede with 71401-40
(the stop nut and safety cap are included)

IMPORTANT: in contrast to complete tools with nose assemblies, those fitted with swivel heads include the nose tip as a part of the head.



Remove Male 'T' Adaptor **1** from the Tool (see page 11) and replace with Jaw Spreader Housing (71210-02101).