

Nose Assemblies

Avdelok® and Maxlok® Nose Assemblies

AVDELOK®

NOSE ASSEMBLY

FASTENER			NOSE ASSEMBLY	see
NAME	Ø ¹	MATERIAL	PART N°	below
AVDELOK®	3/16 ; 4.8	All	71230-05010	... 391
	1/4 ; 6.4	All	71230-05020	... 392

¹ In inches then in millimetres

COMPLETE TOOL PART NUMBER :
 precede with 71255-00

NOSE ASSEMBLY part n°
71230-05010 for 4.8 (3/16") Avdelok®

ITEM	DESCRIPTION	PART N°
1	ANVIL CASING	71230-05012
2	BUFFER	71230-05014
3	ANVIL	71230-05011
4	SHROUD	71230-05013
5	CHUCK COLLET	07200-02101
6	CHUCK JAWS	07220-02102
7	SPRING GUIDE	07220-02104
8	SPRING	07220-02103
9	FRICTION RING	07610-02004
10	nG4 CHUCK COLLET ADAPTOR	07610-00501
11	nG4 LOCKNUT	71233-20200

NOSE ASSEMBLY part n°
71230-05020 for 6.4 (1/4") Avdelok®

ITEM	DESCRIPTION	PART N°
1	ANVIL CASING	71230-05012
2	BUFFER	71230-05014
3	ANVIL	71230-05021
4	SHROUD	71230-05013
5	CHUCK COLLET	07200-02201
6	CHUCK JAWS	07220-02302
7	SPRING GUIDE	07220-02104
8	SPRING	07220-02103
9	FRICTION RING	07610-02004
10	nG4 CHUCK COLLET ADAPTOR	07610-00501
11	nG4 LOCKNUT	71233-20200

MAXLOK®

NOSE ASSEMBLY

FASTENER			NOSE ASSEMBLY	see
NAME	Ø ¹	MATERIAL	PART N°	below
MAXLOK®	3/16 ; 4.8	All	07610-02000	... 371
	1/4 ; 6.4	Al Alloy	07610-02100	... 372

¹ In inches then in millimetres

COMPLETE TOOL PART NUMBER :
 precede with 71255-00

NOSE ASSEMBLY
part n° 07610-02000 for 3/16" Ø

ITEM	DESCRIPTION	PART N°
4	JAWS	07610-02003
7	SPRING	07610-02107
8	LOCKING RING	07610-02004
9	CHUCK COLLET	07610-02002
10	SPRING GUIDE	07220-02104
12	ANVIL	07610-02001
13	nG4 STOP NUT ASSY	71233-20200
14	nG4 CHUCK COLLET ADAPTOR	07610-00501
15	ANVIL ADAPTOR	71230-02063
16	ANVIL NUT	07610-00307

NOSE ASSEMBLY
part n° 07610-02100 for 1/4" Ø

ITEM	DESCRIPTION	PART N°
4	JAWS	07610-02103
7	SPRING	07610-02107
8	LOCKING RING	07610-02004
9	CHUCK COLLET	07610-02102
10	SPRING GUIDE	07220-02104
12	ANVIL	07610-02101
13	nG4 STOP NUT ASSY	71233-20200
14	nG4 CHUCK COLLET ADAPTOR	07610-00501
15	ANVIL ADAPTOR	71230-02063
16	ANVIL NUT	07610-00307

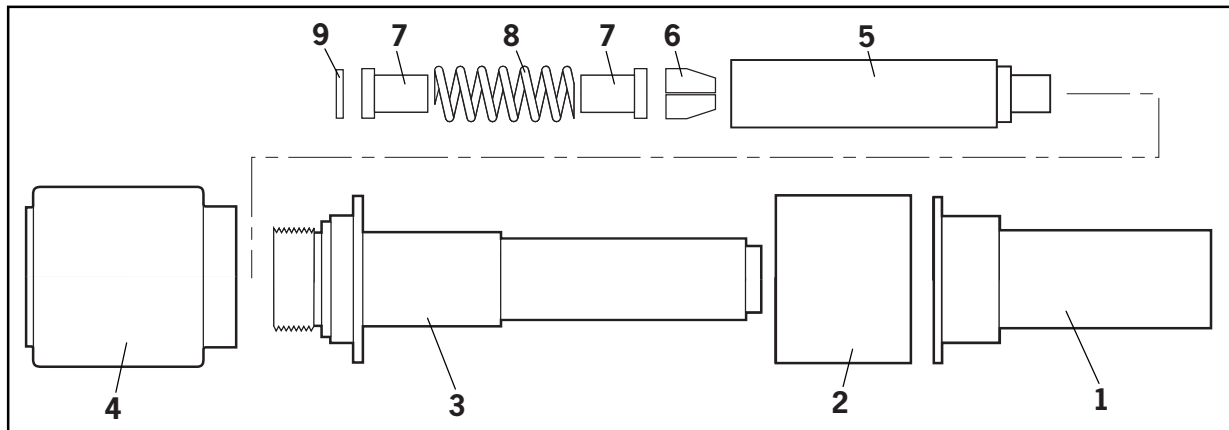
READ MAXLOK® 'FITTING INSTRUCTIONS' PAGE 10.

Nose Assemblies

Fitting Instructions Avdelok®

IMPORTANT
Air supply must be disconnected when fitting or removing nose assemblies

- Assemble Chuck Jaws **6**, Spring Guides **7** and Spring **8** into Chuck Collet **5**. (Lightly coat Chuck Jaws and Chuck Collet internal bores with Molythium grease).
- Screw chuck collet (assembled as above) onto Chuck Collet Adaptor of tool assembly (item **1** page 16). Lock in position with Friction Ring **9**.
- Screw Anvil **3** into front of placing tool.
- Assemble Buffer **2** over Anvil **3** followed by Anvil Casing **1**.
- Fit rubber Shroud **4** over Anvil Casing **1** and Buffer **2** and locate over flange of Anvil **3** to hold components in position.



Servicing Instructions

- Remove nose assembly from tool using the reverse procedure to the fitting instructions above.
- Clean parts. Worn or damaged parts should be replaced.
- Check Anvil **3** for wear and/or damage to the swaging bore.
- Lightly coat Chuck Jaws **6** and Chuck Collet **5** internal bores with Molythium grease.
- Assemble as above instructions.
- For ease of fitting the rubber shroud, liquid soap can be smeared on its internal surface prior to assembly.

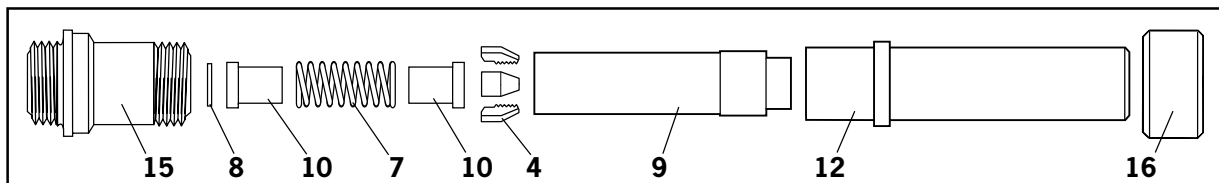
Item numbers in **bold** refer to the Avdelok® Nose Assembly on page 8.

Nose Assemblies

Fitting Instructions Maxlok®

IMPORTANT
Air supply must be disconnected when fitting or removing nose assemblies

- Fit Locking Ring **8** onto the Chuck Collet Adaptor.
- Lightly coat Jaws **4** with Moly Lithium grease.
- Drop Jaws **4** into Chuck Collet **9**.
- Insert one Spring Guide **10** into Chuck Collet **9**.
- Locate Spring **7** onto the Spring Guide **10** already in place.
- Drop the other Spring Guide **10** into Spring **7**.
- Holding tool pointing down, screw the assembled Chuck Collet onto the Chuck Collet Adaptor and tighten with spanner.
- Screw Anvil Adaptor **15** into the Head Assembly.
- Place Anvil **12** over Chuck Collet **9** and lock into place with Anvil Nut **16**.



Servicing Instructions

- Remove nose assembly from tool using the reverse procedure to the fitting instructions above.
- Clean parts. Worn or damaged parts should be replaced.
- Check the Anvil **12** for wear and/or damage to the swaging bore.
- Lightly coat Chuck Jaws **4** and Chuck Collet **9** internal bores with Molythium grease.
- Assemble as above instructions.

Item numbers in **bold** refer to the Maxlok® Nose Assembly on page 8.