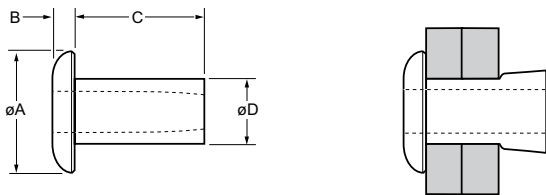


Chobert® 1125 / 1131 /1135



For installation information please refer to the tooling overview and manuals on our website www.avdel-global.com.
 Pour les conditions de pose, merci de vous référer à la description de l'outil et aux manuels disponibles sur notre site Web.
 Angaben zur Verarbeitung entnehmen Sie bitte der Geräteübersicht und den Betriebsanleitungen auf unserer Website.
 Per informazioni sull'installazione preghiamo consultare i manuali e la panoramica degli attrezzi sul nostro sito web.
 Para ver información sobre máquinas de colocación, consulte nuestra página web, apartados visión general de máquinas y manuales.

English	Français	Deutsch	Italiano	Español
Dome head	Tête plate	Flachrundkopf	Testa tonda	Cabeza alomada
Aluminium alloy Natural	Alliage d'aluminium Brut	Aluminium Blank	Lega di alluminio Nessuna finitura	Aluminio Natural



ø	Ø		Ø		øA	B	C	øD	Fasteners per pod/ Nombre de rivets par chargeur / Niete pro Magazin/ Rivetti per caricatore / Uds./carga	Aluminium		
	min.	max.	min.	max.						± 0.3	max.	± 0.18
nom.	min.	max.	min.	max.	± 0.3	max.	± 0.18	max.	± 1	Part No/ref	Part No/ref	Part No/ref
2.4 (3/32")		1.57	2.49	2.55	4.0	1.0	3.17	2.48	73	01125-00304	01131-00304	01135-00304
	1.57	3.17					4.75		52	01125-00306	01131-00306	01135-00306
	3.17	4.75					6.35		41	01125-00308	01131-00308	01135-00308
	4.75	6.35					7.92		33	01125-00310	01131-00310	01135-00310
	6.35	7.92					9.52		28		01131-00312	
	7.92	9.52					11.10		24		01131-00314	
	9.52	11.10					12.70		22		01131-00316	
3.2 (1/8")	0.00	1.57	3.28	3.34	5.2	1.2	3.17	3.27	71	01125-00404	01131-00404	01135-00404
	1.57	3.17					4.75		51	01125-00406	01131-00406	01135-00406
	3.17	4.75					6.35		39	01125-00408	01131-00408	01135-00408
	4.75	6.35					7.92		32	01125-00410	01131-00410	01135-00410
	6.35	7.92					9.52		27	01125-00412	01131-00412	01135-00412
	7.92	9.52					11.10		23	01125-00414		
4.0 (5/32")	1.57	3.17	4.09	4.16	6.2	1.5	4.75	4.06	47	01125-00506	01131-00506	01135-00506
	3.17	4.75					6.35		38	01125-00508	01131-00508	01135-00508
	4.75	6.35					7.92		31	01125-00510	01131-00510	01135-00510
	6.35	7.92					9.52		27	01125-00512	01131-00512	01135-00512
	7.92	9.52					11.10		23	01125-00514	01131-00514	01135-00514
	9.52	11.10					12.70		21	01125-00516	01131-00516	01135-00516
	11.10	12.70					14.40			01125-00518	01131-00518	01135-00518
	12.70	14.27					16.00			01125-00520	01131-00520	

all dimensions in mm / en millimètres / alle Maße in mm / in millimetri / en milímetros



www.avdel-global.com

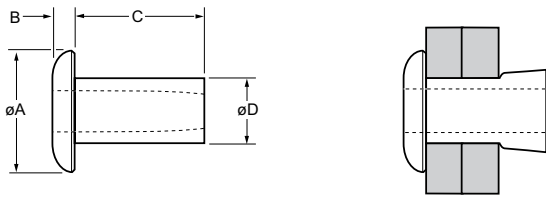
© 2011 Infastech

Chobert® is a trademark of Avdel UK Limited

06.2011, page 1/2

Data shown is subject to change without prior notice as a result of continuous product development and improvement policy.
 Your local Avdel representative is at your disposal should you need to confirm latest information.

Chobert® 1125 / 1131 /1135



ø					øA	B	C	øD	Fasteners per pod/ Nombre de rivets par chargeur / Niete pro Magazin/ Rivetti per caricatore / Uds./carga	Aluminium		
										2.5 % Mg AA 5052 DIN 1725 AlMg2.5 Werkstoff 3.3523	3.5 % Mg BS 1473 5154A DIN 1725 AlMg3.5 Werkstoff 3.3535	5 % Mg BS 1473 5056A DIN 1725 AlMg5 Werkstoff 3.3555
nom.	min.	max.	min.	max.	± 0.4	max.	± 0.18	max.	± 1	Part No/ref	Part No/ref	Part No/ref
4.8 (3/16")		1.57	4.85	4.93	8.6	1.8	4.82	3.96	50		01131-00605	
	1.57	3.17						5.56	38	01125-00607	01131-00607	01135-00607
	3.17	4.75						7.14	33	01125-00609	01131-00609	01135-00609
	4.75	6.35						8.74	28	01125-00611	01131-00611	01135-00611
	6.35	7.92						10.31	24	01125-00613	01131-00613	01135-00613
	7.92	9.52						11.91	21	01125-00615	01131-00615	01135-00615
	9.52	11.10						13.49	19	01125-00617	01131-00617	01135-00617
	11.10	12.70						15.09	17	01125-00619	01131-00619	01135-00619
6.4 (1/4")	3.17	4.75	6.35	6.42	10.2	2.2	6.32	7.14	32		01131-00809	01135-00809
	4.75	6.35						8.74	27		01131-00811	01135-00811
	6.35	7.92						10.31	24		01131-00813	01135-00813
	7.92	9.52						11.91	21		01131-00815	01135-00815
	9.52	11.10						13.49	19		01131-00817	01135-00817
	11.10	12.70						15.09	17		01131-00819	01135-00819
	12.70	14.27						16.66	16		01131-00821	
	14.27	15.87						18.26	14		01131-00823	
	15.87	17.45						19.84	13		01131-00825	

all dimensions in mm / en millimètres / alle Maße in mm / in millimetri / en milímetros

ø			
	Series 01125 kN ¹⁾	Series 01131 kN ¹⁾	Series 01135 kN ¹⁾
2.4 mm (3/32")	0.3	0.5	0.5
3.2 mm (1/8")	0.6	0.8	0.8
4.0 mm (5/32")	1.0	1.6	1.6
4.8 mm (3/16")	1.5	2.0	2.0
6.4 mm (1/4")		2.7	2.7

1) typical values / valeurs moyennes / typische Werte / Valori tipici / resistencias máximas recomendadas



www.avdel-global.com

© 2011 Infastech

Chobert® is a trademark of Avdel UK Limited

06.2011, page 2/2

Data shown is subject to change without prior notice as a result of continuous product development and improvement policy.
Your local Avdel representative is at your disposal should you need to confirm latest information.