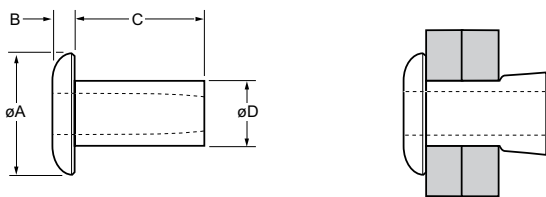


Chobert® 1125 / 1131 /1135



For installation information please refer to the tooling overview and manuals on our website www.avdel-global.com.
 Pour les conditions de pose, merci de vous référer à la description de l'outil et aux manuels disponibles sur notre site Web.
 Angaben zur Verarbeitung entnehmen Sie bitte der Geräteübersicht und den Betriebsanleitungen auf unserer Website.
 Per informazioni sull'installazione preghiamo consultare i manuali e la panoramica degli attrezzi sul nostro sito web.
 Para ver información sobre máquinas de colocación, consulte nuestra página web, apartados visión general de máquinas y manuales.

English	Français	Deutsch	Italiano	Español
Dome head	Tête plate	Flachrundkopf	Testa tonda	Cabeza alomada
Aluminium alloy	Alliage d'aluminium	Aluminium	Lega di alluminio	Aluminio
Natural	Brut	Blank	Nessuna finitura	Natural



ø	Ø		Ø		øA	B	C	øD	Fasteners per pod / Nombre de rivets par chargeur / Niete pro Magazin / Rivetti per caricatore / Uds./carga	Aluminium																																																													
	min.	max.	min.	max.						± .012	max.	± .007	max.	± 1	2.5 % Mg AA 5052 DIN 1725 AlMg2.5 Werkstoff 3.3523	3.5 % Mg BS 1473 5154A DIN 1725 AlMg3.5 Werkstoff 3.3535	5 % Mg BS 1473 5056A DIN 1725 AlMg5 Werkstoff 3.3555																																																						
nom.	min.	max.	min.	max.	± .012	max.	± .007	max.	± 1	Part No/ref	Part No/ref	Part No/ref																																																											
3/32"		.062	.098	.1005	±.156	.037	.125	.0975	73	01125-00304	01131-00304	01135-00304																																																											
		.125											.187	.250	.312	.375	.437	.500	52	01125-00306	01131-00306	01135-00306																																																	
		.187																					.250	.312	.375	.437	.500	41	01125-00308	01131-00308	01135-00308																																								
		.250																														.312	.375	.437	.500	28	01125-00310	01131-00310	01135-00310																																
		.312																																						.375	.437	.500	24	01125-00312	01131-00312	01135-00312																									
		.375																																													.437	.500	.567	.630	22	01125-00314	01131-00314	01135-00314																	
		.437																																																					.500	.567	.630	22	01125-00316	01131-00316	01135-00316										
1/8"		.062	.129	.1315	±.205	.045	.125	.1285	71	01125-00404	01131-00404	01135-00404																																																											
		.125											.187	.250	.312	.375	.437	51	01125-00406	01131-00406	01135-00406																																																		
		.187																				.250	.312	.375	.437	39	01125-00408	01131-00408	01135-00408																																										
		.250																												.312	.375	.437	.500	32	01125-00410	01131-00410	01135-00410																																		
		.312																																				.375	.437	.500	.567	.630	27	01125-00412	01131-00412	01135-00412																									
		.375																																													.437	.500	.567	.630	23	01125-00414	01131-00414	01135-00414																	
5/32"		.062	.161	.164	±.245	.058	.187	.1595	47	01125-00506	01131-00506	01135-00506																																																											
		.125											.187	.250	.312	.375	.437	.500	.567	.630	38	01125-00508	01131-00508	01135-00508																																															
		.187																							.250	.312	.375	.437	.500	.567	.630	31	01125-00510	01131-00510	01135-00510																																				
		.250																																		.312	.375	.437	.500	.567	.630	27	01125-00512	01131-00512	01135-00512																										
		.312																																												.375	.437	.500	.567	.630	23	01125-00514	01131-00514	01135-00514																	
		.375																																																					.437	.500	.567	.630	21	01125-00516	01131-00516	01135-00516									
		.437																																																													.500	.567	.630	.630	.630	.630	.630	.630	.630
		.500																																																																					
	.562	.630	.630	.630	.630	.630	.630	.630	.630	.630	.630	.630																																																											

all dimensions in inches / en pouces / alle Maße in Zoll / in pollici / en pulgadas



www.avdel-global.com

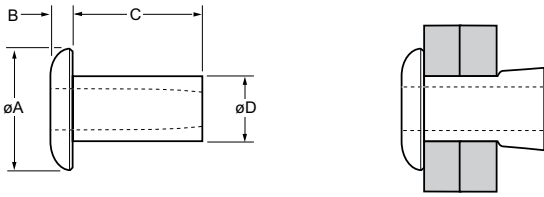
© 2011 Infastech

Chobert® is a trademark of Avdel UK Limited

06.2011, page 1/2

Data shown is subject to change without prior notice as a result of continuous product development and improvement policy.
 Your local Avdel representative is at your disposal should you need to confirm latest information.

Chobert® 1125 / 1131 /1135



ø					øA	B	C	øD	Fasteners per pod/ Nombre de rivets par chargeur / Niete pro Magazin/ Rivetti per caricatore / Uds./carga	Aluminium			
										2.5 % Mg AA 5052 DIN 1725 AlMg2.5 Werkstoff 3.3523	3.5 % Mg BS 1473 5154A DIN 1725 AlMg3.5 Werkstoff 3.3535	5 % Mg BS 1473 5056A DIN 1725 AlMg5 Werkstoff 3.3555	
nom.	min.	max.	min.	max.	± .012	max.	± .007	max.	± 1	Part No/ref	Part No/ref	Part No/ref	
3/16"		.062	.191	.194	.339	.071	.1895		50		01131-00605		
	.062	.125								38	01125-00607	01131-00607	01135-00607
	.125	.187								33	01125-00609	01131-00609	01135-00609
	.187	.250								28	01125-00611	01131-00611	01135-00611
	.250	.312								24	01125-00613	01131-00613	01135-00613
	.312	.375								21	01125-00615	01131-00615	01135-00615
	.375	.437								19	01125-00617	01131-00617	01135-00617
	.437	.500								17	01125-00619	01131-00619	01135-00619
1/4"	.125	.187	.250	.253	.401	.084	.2485		32		01131-00809	01135-00809	
	.187	.250								27		01131-00811	01135-00811
	.250	.312								24		01131-00813	01135-00813
	.312	.375								21		01131-00815	01135-00815
	.375	.437								19		01131-00817	01135-00817
	.437	.500								17		01131-00819	01135-00819
	.500	.562								16		01131-00821	
	.562	.625								14		01131-00823	
	.625	.687								13		01131-00825	

all dimensions in inches / en pouces / alle Maße in Zoll / in pollici / en pulgadas

ø			
	Series 01125	Series 01131	Series 01135
nom.	lbf ¹⁾	lbf ¹⁾	lbf ¹⁾
3/32"	67	112	112
1/8"	135	180	180
5/32"	225	360	360
3/16"	337	450	450
1/4"		607	607

1) typical values / valeurs moyennes / typische Werte / Valori tipici / resistencias máximas recomendadas

