

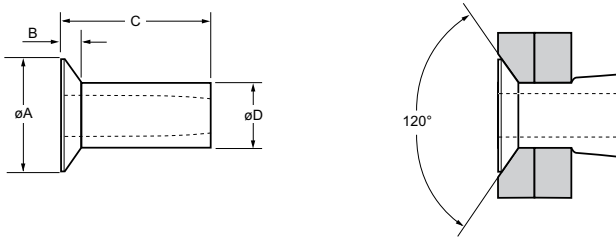
Chobert® 1122



For installation information please refer to the tooling overview and manuals on our website www.avdel-global.com.
 Pour les conditions de pose, merci de vous référer à la description de l'outil et aux manuels disponibles sur notre site Web.
 Angaben zur Verarbeitung entnehmen Sie bitte der Geräteübersicht und den Betriebsanleitungen auf unserer Website.
 Per informazioni sull'installazione preghiamo consultare i manuali e la panoramica degli attrezzi sul nostro sito web.
 Para ver información sobre máquinas de colocación, consulte nuestra página web, apartados visión general de máquinas y manuales.

English	Français	Deutsch	Italiano	Español
Countersunk head	Tête fraisée	Senkkopf	Testa svasata	Cabeza avellanada
Low carbon steel*	Acier bas carbone*	Stahl*	Acciaio a basso tenore di carbonio*	Acero bajo en carbono*
Zinc plated	Revêtement zingué	Verzinkt	Zincato	Zincado
Clear trivalent passivated	Passivation claire trivalente	Klar chromatiert, Cr6-frei	Passivazione chiara trivalente	Pasivado claro trivalente

*: BS 3111 Type 0 SAE 1008 DIN 1654 Qst 34-3

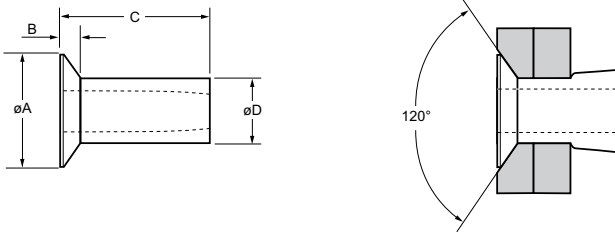


ø	[Cross-section diagram]		[Thread diagram]		øA	B	C	øD	[Load diagram]	Fasteners per pod/ Nombre de rivets par chargeur / Niete pro Magazin/ Rivetti per carica- tore / Uds./carga	Part No/ref
	min.	max.	min.	max.							
1/8"	.036	.062	.1285	.1315	.205	.036	.130	.128	314	± 1	01122-00404
	.036	.093					.161			90	01122-00405
	.062	.125					.192			72	01122-00406
	.125	.187					.255			61	01122-00408
	.187	.250					.317			46	01122-00410
	.250	.312					.380			37	01122-00412
5/32"	.062	.125	.161	.164	.245	.038	.192	.159	539	± 1	01122-00506
	.125	.187					.255			61	01122-00508
	.187	.250					.317			46	01122-00510
	.250	.312					.380			37	01122-00512
	.312	.375					.442			31	01122-00514
	.375	.437					.505			26	01122-00516

all dimensions in inches / en pouces / alle Maße in Zoll / in pollici / en pulgadas

1) typical values / valeurs moyennes / typische Werte / Valori tipici / resistencias máximas recomendadas

Chobert® 1122



ø					øA	B	C	øD		Fasteners per pod/ Nombre de rivets par chargeur / Niete pro Magazin/ Rivetti per carica- tore / Uds./carga	Part No/ref
	nom.	min.	max.	min.							
3/16"	.062	.125	.191	.194	.339	.056	.224	.191	719	52	01122-00607
	.125	.187					.286			41	01122-00609
	.187	.250					.349			33	01122-00611
	.250	.312					.411			28	01122-00613
	.312	.375					.474			25	01122-00615
	.375	.437					.536			22	01122-00617
	.437	.500					.599			19	01122-00619
1/4"	.250	.312	.250	.253	.401	.057	.411	.250	989	28	01122-00813
	.312	.375					.474			25	01122-00815
	.375	.437					.536			22	01122-00817
	.437	.500					.599			19	01122-00819
	.500	.562					.661			18	01122-00821
	.562	.625					.724			16	01122-00823
	.625	.687					.786			15	01122-00825

all dimensions in inches / en pouces / alle Maße in Zoll / in pollici / en pulgadas

1) typical values / valeurs moyennes / typische Werte / Valori tipici / resistencias máximas recomendadas