

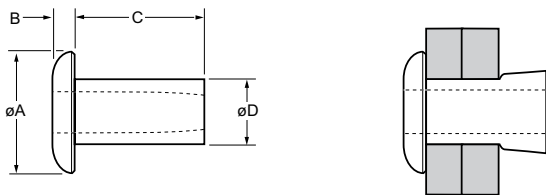
Chobert® 1121



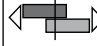


For installation information please refer to the tooling overview and manuals on our website www.avdel-global.com.
 Pour les conditions de pose, merci de vous référer à la description de l'outil et aux manuels disponibles sur notre site Web.
 Angaben zur Verarbeitung entnehmen Sie bitte der Geräteübersicht und den Betriebsanleitungen auf unserer Website.
 Per informazioni sull'installazione preghiamo consultare i manuali e la panoramica degli attrezzi sul nostro sito web.
 Para ver información sobre máquinas de colocación, consulte nuestra página web, apartados visión general de máquinas y manuales.

English	Français	Deutsch	Italiano	Español
Dome head	Tête plate	Flachrundkopf	Testa tonda	Cabeza alomada
Low carbon steel*	Acier bas carbone*	Stahl*	Acciaio a basso tenore di carbonio*	Acero bajo en carbono*
Zinc plated	Revêtement zingué	Verzinkt	Zincato	Zincado
Clear trivalent passivated	Passivation claire trivalente	Klar chromatiert, Cr6-frei	Passivazione chiara trivalente	Pasivado claro trivalente

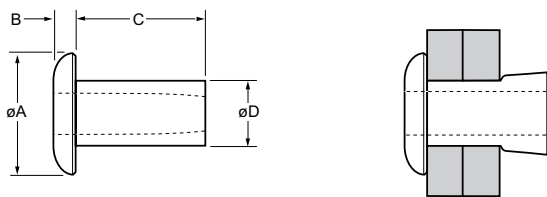
*: SAE 1008 / EN 10263-2 C8C (DIN 10263-2 C8C, Qst 34-3)



ø					øA	B	C	øD		Fasteners per pod/ Nombre de rivets par chargeur / Niete pro Magazin/ Rivetti per carica- tore / Uds./carga	Part No/ref	
	nom.	min.	max.	min.								max.
3.2 (1/8")	0.00	1.57	3.26	3.34	5.2	1.2	3.2	3.25	1.4	1.4	71	01121-00404
	0.79	2.36					4.0				57	01121-00405
	1.57	3.18					4.8				51	01121-00406
	3.18	4.75					6.4				39	01121-00408
	4.75	6.35					7.9				32	01121-00410
	6.35	7.92					9.5				27	01121-00412
4.0 (5/32")	1.57	3.18	4.09	4.16	6.2	1.5	4.8	4.04	2.4	2.4	47	01121-00506
	3.18	4.75					6.4				38	01121-00508
	4.75	6.35					7.9				31	01121-00510
	6.35	7.92					9.5				27	01121-00512
	7.92	9.52					11.1				23	01121-00514
	9.52	11.10					12.7				21	01121-00516

all dimensions in mm / en millimètres / alle Maße in mm / in millimetri / en milímetros

1) typical values / valeurs moyennes / typische Werte / Valori tipici / resistencias máximas recomendadas



ø					øA	B	C	øD		Fasteners per pod/ Nombre de rivets par chargeur / Niete pro Magazin/ Rivetti per carica- tore / Uds./carga	Part No/ref		
	nom.	min.	max.	min.								max.	± 0,3
4.8 (3/16")	0.00	1.57	4.86	4.93	± 0,3	max.	max.	4.85	3.2	4.85	3.2	50	01121-00605
	1.57	3.18										38	01121-00607
	3.18	4.75										33	01121-00609
	4.75	6.35										28	01121-00611
	6.35	7.92										24	01121-00613
	7.92	9.52										21	01121-00615
	9.52	11.10										19	01121-00617
	11.10	12.70										17	01121-00619
6.4 (1/4")	3.18	4.75	6.36	6.42	± 0,3	max.	max.	6.35	4.4	6.35	4.4	32	01121-00809
	4.75	6.35										27	01121-00811
	6.35	7.92										24	01121-00813
	7.92	9.52										21	01121-00815
	9.52	11.10										19	01121-00817
	11.10	12.70										17	01121-00819

all dimensions in mm / en millimètres / alle Maße in mm / in millimetri / en milímetros

1) typical values / valeurs moyennes / typische Werte / Valori tipici / resistencias máximas recomendadas