

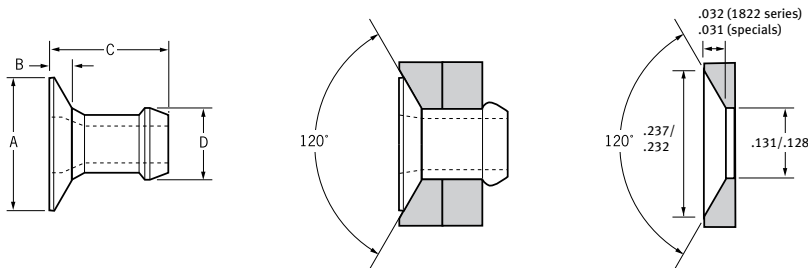
# Briv® 1822



For installation information please refer to the tooling overview and manuals on our website [www.avdel-global.com](http://www.avdel-global.com).  
 Pour les conditions de pose, merci de vous référer à la description de l'outil et aux manuels disponibles sur notre site Web.  
 Angaben zur Verarbeitung entnehmen Sie bitte der Geräteübersicht und den Betriebsanleitungen auf unserer Website.  
 Per informazioni sull'installazione preghiamo consultare i manuali e la panoramica degli attrezzi sul nostro sito web.  
 Para ver información sobre máquinas de colocación, consulte nuestra página web, apartados visión general de máquinas y manuales.

English	Français	Deutsch	Italiano	Español
120° Countersunk	120° Tête fraisée	120° Senkkopf	120° Testa svasata	120° Cabeza avellanada
Low carbon steel*	Acier bas carbone*	Stahl*	Acciaio a basso tenore di carbonio*	Acero bajo en carbono*
Zinc plated	Revêtement zingué	Verzinkt	Zincato	Zincado
Clear trivalent passivated	Passivation claire trivalente	Klar chromatiert, Cr6-frei	Passivazione chiara trivalente	Pasivado claro trivalente

\*: SAE 1008 / EN 10263-2 C8C (DIN 10263-2 C8C, Qst 34-3)



Rec. c/sunk hole dimensions (ø 1/8" only)  
 Dimensions recommandées du trou fraisé (1/8" seulement)  
 Empf. Abmessungen für Senkloch (nur ø 1/8")  
 Dimensioni raccomandate del foro svasato (solo 1/8")  
 Dimensiones del taladro avellanado recomendadas (solo 1/8")

ø	A		B		C	D	lb <sup>f1</sup>	lb <sup>f1</sup>	Fasteners per pod / Nombre de rivets par chargeur / Niete pro Magazin / Rivetti per caricatore / Uds./carga	Part No/ref		
	min.	max.	min.	max.							± 1	
1/8"	.060	.110	.1285	.1315	.230	.030	.188	.1245	213	370	64	01822-00406
	.100	.150									52	01822-00407
	.140	.190									44	01822-00408
	.180	.230									38	01822-00410
	.220	.270									33	01822-00411
5/32"	.062	.115	.1562	.1592	.240	.040	.204	.1535	370	630	59	01822-00505
	.086	.135									54	01822-00506
	.105	.155									49	01822-00507
	.145	.195									42	01822-00509
	.185	.235									36	01822-00511
	.225	.275									32	01822-00513

Special Option: designed for thin sheet applications / Conçu pour des applications de faible épaisseur / für geringe Materialstärken / Progettato per applicazioni in spessori sottili / Diseñado para aplicaciones de chapa fina

1/8"	.050	.090	.1285	.1315	.230	.029	.170	.1245	213	370	72	01810-06480
	.057	.067				.027	.165				72	01810-10375

all dimensions in inches / en pouces / alle Maße in Zoll / in pollici / en pulgadas

1) typical values / valeurs moyennes / typische Werte / Valori tipici / resistencias máximas recomendadas



An Acument™ Global Technologies Company

[www.avdel-global.com](http://www.avdel-global.com)

© 2007 Acument Intellectual Properties, LLC

Briv® is a trademark of Avdel UK Limited

10.2009

Data shown is subject to change without prior notice as a result of continuous product development and improvement policy.  
 Your local Avdel representative is at your disposal should you need to confirm latest information.