

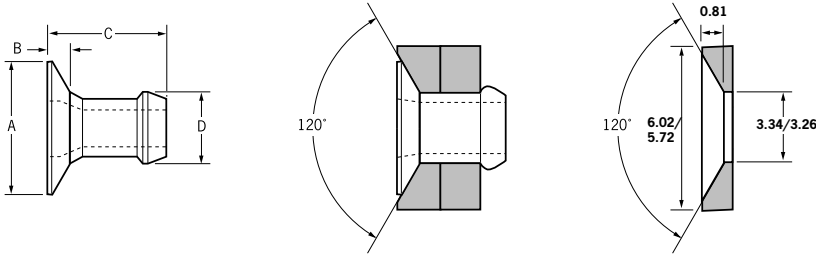
Briv[®] 1802



For installation information please refer to the tooling overview and manuals on our website www.avdel-global.com.
 Pour les conditions de pose, merci de vous référer à la description de l'outil et aux manuels disponibles sur notre site Web.
 Angaben zur Verarbeitung entnehmen Sie bitte der Geräteübersicht und den Betriebsanleitungen auf unserer Website.
 Per informazioni sull'installazione preghiamo consultare i manuali e la panoramica degli attrezzi sul nostro sito web.
 Para ver información sobre máquinas de colocación, consulte nuestra página web, apartados visión general de máquinas y manuales.

English	Français	Deutsch	Italiano	Español
120° Countersunk	120° Tête fraisée	120° Senkkopf	120° Testa svasata	120° Cabeza avellanada
Aluminium alloy* (5 % Mg)	Alliage d'aluminium* (5% Mg)	Aluminium* (5 % Mg)	Lega di alluminio* (5% Mg)	Aluminio* (5% Mg)
Natural	Brut	Blank	Nessuna finitura	Natural

*: BS 1473 5056A DIN 1725 AlMg5 Werkstoff 3.3555



Rec. c/sunk hole dimensions (ø 3.2 mm only)
 Dimensions recommandées du trou fraisé (3,2 mm seulement)
 Empf. Abmessungen für Senkloch (nur ø 3,2 mm)
 Dimensioni raccomandate del foro svasato (solo 3.2).
 Dimensiones del taladro avellanado recomendadas (solo 3.2)

ø	min. max.		min. max.		± 0.5	max.	max.	max.	kN ¹⁾	kN ¹⁾	Fasteners per pod / Nombre de rivets par chargeur / Niete pro Magazin / Rivetti per caricatore / Uds./carga ± 1	Part No/ref
	nom.	min.	max.	min.								
3.2 (1/8")	1.52	2.79	3.26	3.34	5.5	0.89	4.77	3.17	0.7	1.3	64	01802-00406
	2.54	3.81					5.79				52	01802-00407
	3.56	4.83					6.81				44	01802-00408
	4.57	5.84					7.82				38	01802-00410
	5.59	6.86					8.84				33	01802-00411
4,0 (5/32")	1.57	2.93	3.97	4.04	6.5	1.02	5.18	3.90	1.1	1.7	59	01802-00505
	2.15	3.43					5.69				54	01802-00506
	2.66	3.94					6.19				49	01802-00507
	3.68	4.96					7.21				42	01802-00509
	4.69	5.97					8.22				36	01802-00511
	5.71	6.99					9.24				32	01802-00513

all dimensions in mm / en millimètres / alle Maße in mm / in millimetri / en milímetros

1) typical values / valeurs moyennes / typische Werte / Valori tipici / resistencias máximas recomendadas



An Acument™ Global Technologies Company

www.avdel-global.com

© 2007 Acument Intellectual Properties, LLC

Briv[®] is a trademark of Avdel UK Limited

02a.2007

Data shown is subject to change without prior notice as a result of continuous product development and improvement policy.
 Your local Avdel representative is at your disposal should you need to confirm latest information.