

Servicing the Tool

Rotary Valve

Dismantling

- Using a 4mm pin punch (07900-00158) drive Trigger Pin **46** out and remove Trigger Assembly **33**.
- Remove Pneumatic Piston Assembly **57** as described in Pneumatic Piston Assembly.
- Using Spanner (07900-00672), and Location Spigot (07900-00671), unscrew Clamp Nut **39** and remove together with Top Plate Assembly **44** together with Tie Rods **56**, Transfer Tube Assembly **61**, Seperate Body **30** from Handle **64**. Remove 'O' Rings **16** and **17**.
- Seperate Head Assembly **58** from Handle **64**. NOTE ORIENTATION OF ROTARY VALVE **38**
- Push out Rotary Valve **38** together with 'O' Rings **5**.

Assemble in reverse order to Dismantling Instructions noting the following:

- Seals should be checked for damage and replaced if necessary, lubricated with Molykote® 55m grease.
- Ensure Rotary Valve **38** is assembled in correct orientation to align valve pins with forks on the Trigger **33**. See illustration below.

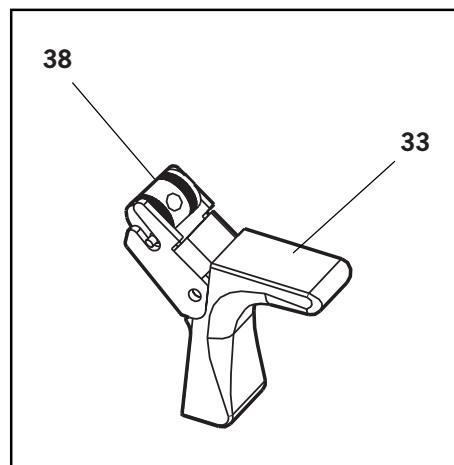
Trigger

Dismantling

- Using a 4mm pin punch (07900-00158) drive Trigger Pin **46** out and remove Trigger **33**.
- Unscrew Trigger Valve **21** using trigger valve extractor (0900-00692).

Assemble in reverse order to Dismantling Instructions noting the following:

- When assembling Trigger **33** the trigger forks locate on the pins each side of the Rotary Valve **38**.
- Ensure Rotary Valve **38** is orientated correctly. See illustration below.



Item numbers in **bold** refer to the general assembly drawing and parts list on pages 26 and 27.

Servicing the Tool

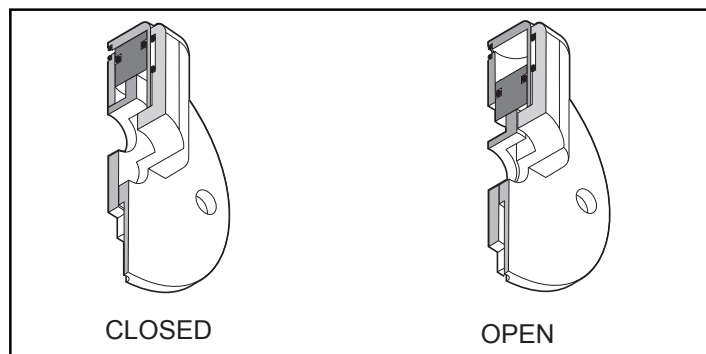
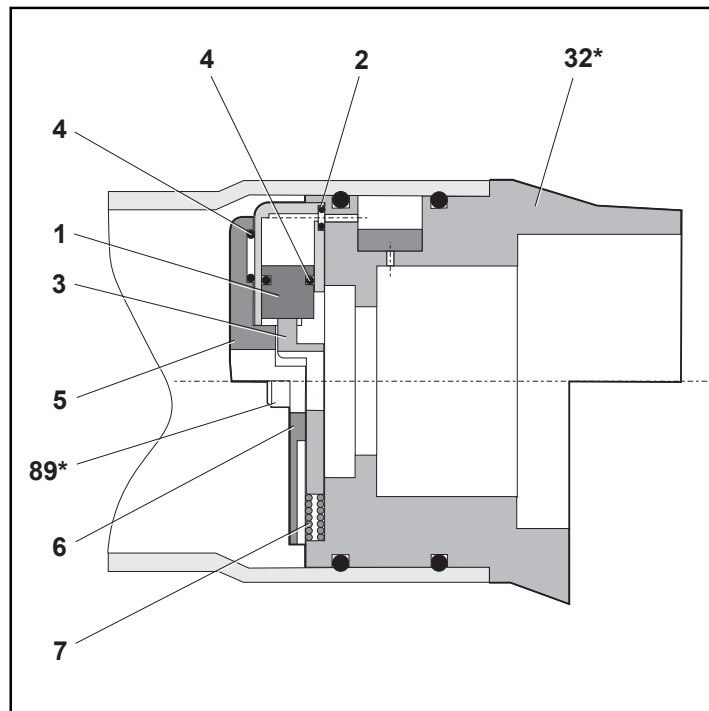
Stop Plate Assembly (71213-03900)

Assembly (see illustration below)

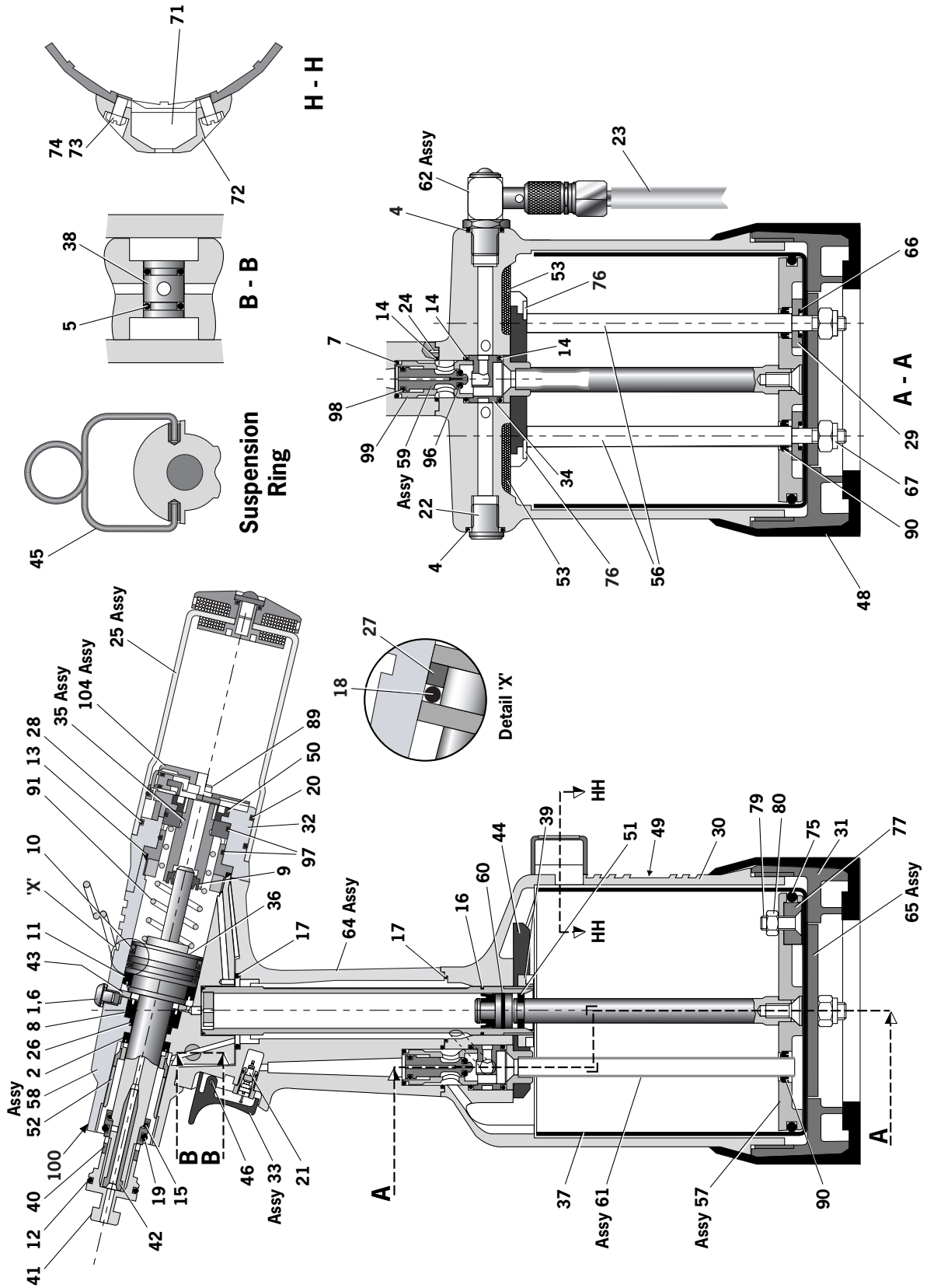
- Place 'O' Ring **2** into the recess in Housing **5** retain in position using grease Molykote® 55m.
- Assemble 'O' Ring **4** onto Piston **1** and push assembly into Housing **5** making sure it is in as far as it will go.
- Position the slot in Piston **1** parallel to the step face in Housing **5**.
- Slide Plate Shut Off **3** into the assembled parts **1**, **2**, **4**, and **5**. Retain parts in place using grease Molykote® 55m.
- Place 'O' Ring **4** into the recess of Cover Plate **6** retain in position using grease Molykote® 55m.
- Place Spring **7** into position, locate using the recesses in both Plate Shut Off **3** and Bottle Adaptor Assembly **32***.
- Position the above assembled parts onto Bottle Adaptor Assembly **32***.
- Secure in position using two Screws **89***.

*see pages 26 and 27.

ITEM	DESCRIPTION
1	PISTON
2	'O' RING
3	PLATE SHUT OFF
4	'O' RING
5	HOUSING
6	COVER PLATE
7	SPRING



General Assembly of Base Tool 71213-02000



Parts List for 71213-02000

71213-02000 PARTS LIST							* These are minimum recommended levels of spares based on regular servicing			
ITEM	PART N°	DESCRIPTION	QTY	SPARES	ITEM	PART N°	DESCRIPTION	QTY	SPARES	
01	07001-00405	M5x5 HEX SOCKET BUTTON HD SCREW	1		43	71210-02019	SEAL RETAINER	1	1	
02	07003-00333	LIP SEAL	1		44	71213-02010	TOP PLATE ASSEMBLY	1	1	
04	07003-00127	O' RING	1		45	71210-02022	SUSPENSION RING	1	1	
05	07003-00189	O' RING	2		46	71210-02024	TRIGGER PIN	1	1	
06	07003-00194	M5 BONDED SEAL	1		48	71210-02055	RUBBER BOOT	1	1	
07	07003-00271	O' RING	1		49	71213-02027	LABEL	1	1	
08	07003-00273	LIP SEAL	1		50	71213-02028	RETAINING NUT	1	1	
09	07003-00274	LIP SEAL	1		51	71210-03205	GUIDE RING	1	1	
10	07003-00275	LIP SEAL	1		52	71210-02104	SEAL HOUSING	1	1	
11	07003-00341	LIP SEAL	1		53	71210-02031	SILENCER	2	2	
12	07003-00277	O' RING	1		56	71211-02004	TIE ROD	2	2	
13	07003-00278	O' RING	1		57	71211-03200	PNEUMATIC PISTON ASSEMBLY	1	1	
14	07003-00281	O' RING	3		58	71213-03320	HEAD ASSEMBLY	1	1	
15	07003-00204	O' RING	1		59	71210-03400	VALVE SPOOL ASSEMBLY	1	1	
16	07003-00287	O' RING	1		60	71210-03800	SEAL ASSEMBLY	1	1	
17	07003-00288	O' RING	2		61	71210-03600	TRANSFER TUBE ASSEMBLY	1	1	
18	07003-00342	O' RING	1		62	71210-03700	ON/OFF VALVE ASSEMBLY	1	1	
19	07003-00310	O' RING	1		64	71213-02013	HANDLE ASSEMBLY	1	1	
20	07003-00415	O' RING	1		65	71221-02014	BASE PLATE ASSEMBLY	1	1	
21	07005-00088	TRIGGER VALVE	1		66	07003-00027	O' RING	2	2	
22	07005-01274	1/8" BSP PLUG	1		67	07002-00108	M6 NYLOC NUT	2	2	
23	07008-00010	6" FLEXIBLE HOSE	1		71	71221-20105	MODIFIED COUNTER	1	1	
24	07007-00224	3mm DIAx10mm SPIROL PIN	2		72	71221-20101	COUNTER MouldING	1	1	
25	71213-03800	STEM COLLECTOR BOTTLE ASSEMBLY	1		73	71221-20103	MOULDING RETAINING NUT	2	2	
26	71213-02021	BEARING TAPE - PISTON ROD	1		74	71221-20102	SPECIAL M4 SCREW	2	2	
27	71213-02022	BEARING TAPE - PISTON	1		75	07003-00280	O' RING	1	1	
28	07003-00416	O' RING	1		76	07002-00163	WASHER	2	2	
29	71221-02006	SEALING WASHER	2		77	07007-01993	CENTRE POLE MAGNET	1	1	
30	71213-02001	BODY MACHINED	1		79	71221-20104	M5 X 19 COUNTERSUNK SCREW	1	1	
31	71211-02002	BASE COVER	1		80	07002-00098	M5 NYLOC NUT	1	1	
32	71213-03000	BOTTLE ADAPTOR ASSEMBLY	1		89	07001-00677	SCREW	2	2	
33	71213-02008	TRIGGER ASSEMBLY	1		90	07003-00274	LIP SEAL	3	3	
34	71210-02009	VALVE SEAT	1		91	07490-03002	SPRING	1	1	
35	71213-02025	END CAP ASSEMBLY	1		96	07003-00268	O' RING	1	1	
36	71213-02121	HEAD PISTON	1		97	07003-00398	O' RING	2	2	
37	71211-02008	CYLINDER LINER	1		98	07003-00042	O' RING	1	1	
38	71213-02012	ROTARY VALVE	1		99	71210-03401	VALVE BODY	1	1	
39	71210-02014	CLAMP NUT	1		100	07007-01503	LABEL BOOK SYMBOL	1	1	
40	71210-02103	LOCKNUT	1		103	07900-00841	TOOL INSTRUCTION MANUAL	1	1	
41	71213-02020	MALE T ADAPTOR	1		104	71213-03900	STOP PLATE ASSEMBLY	1	1	
42	71210-02102	VACUUM SLEEVE	1							