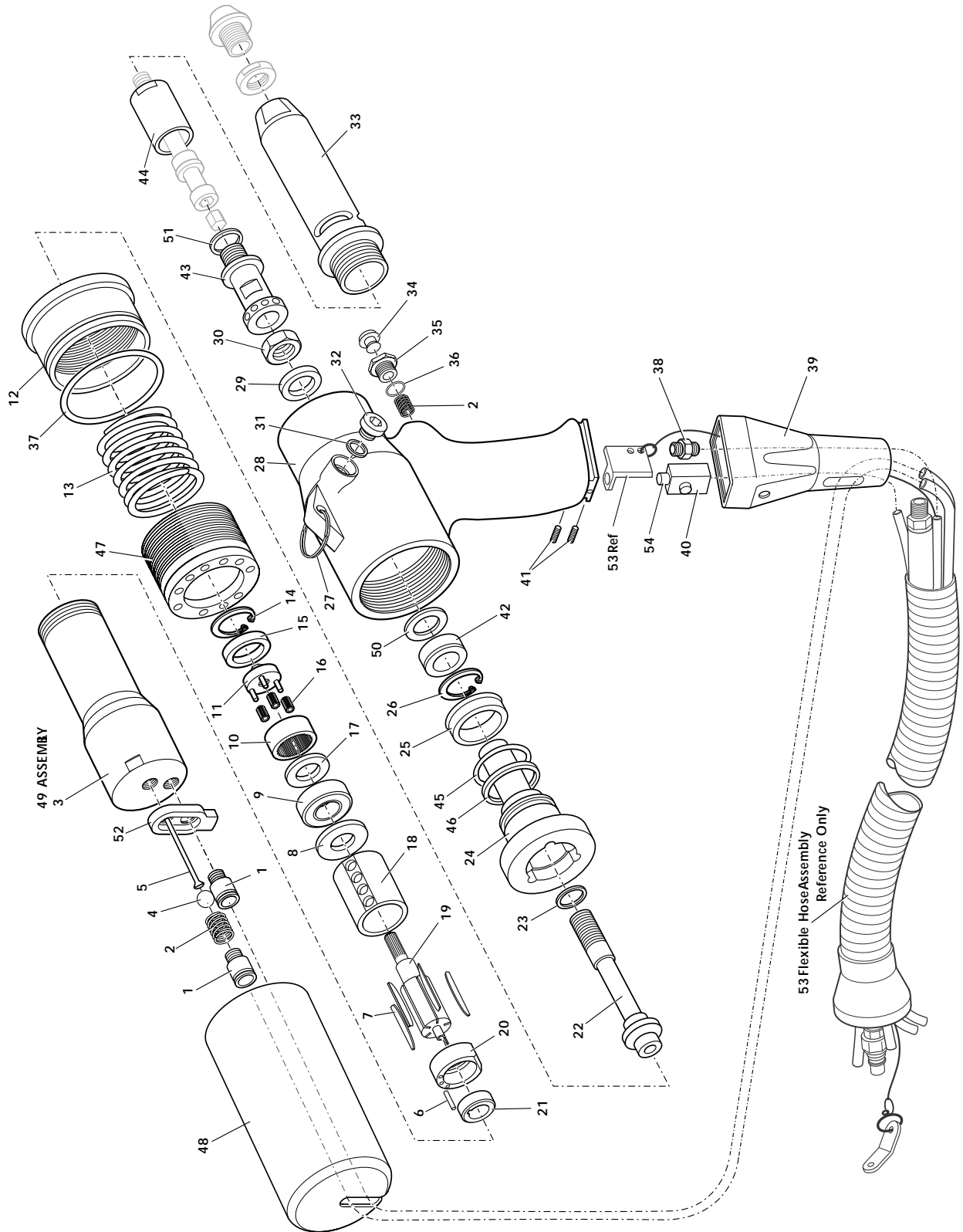


Head Assembly 74405-12000

General Assembly



Head Assembly 74405-12000

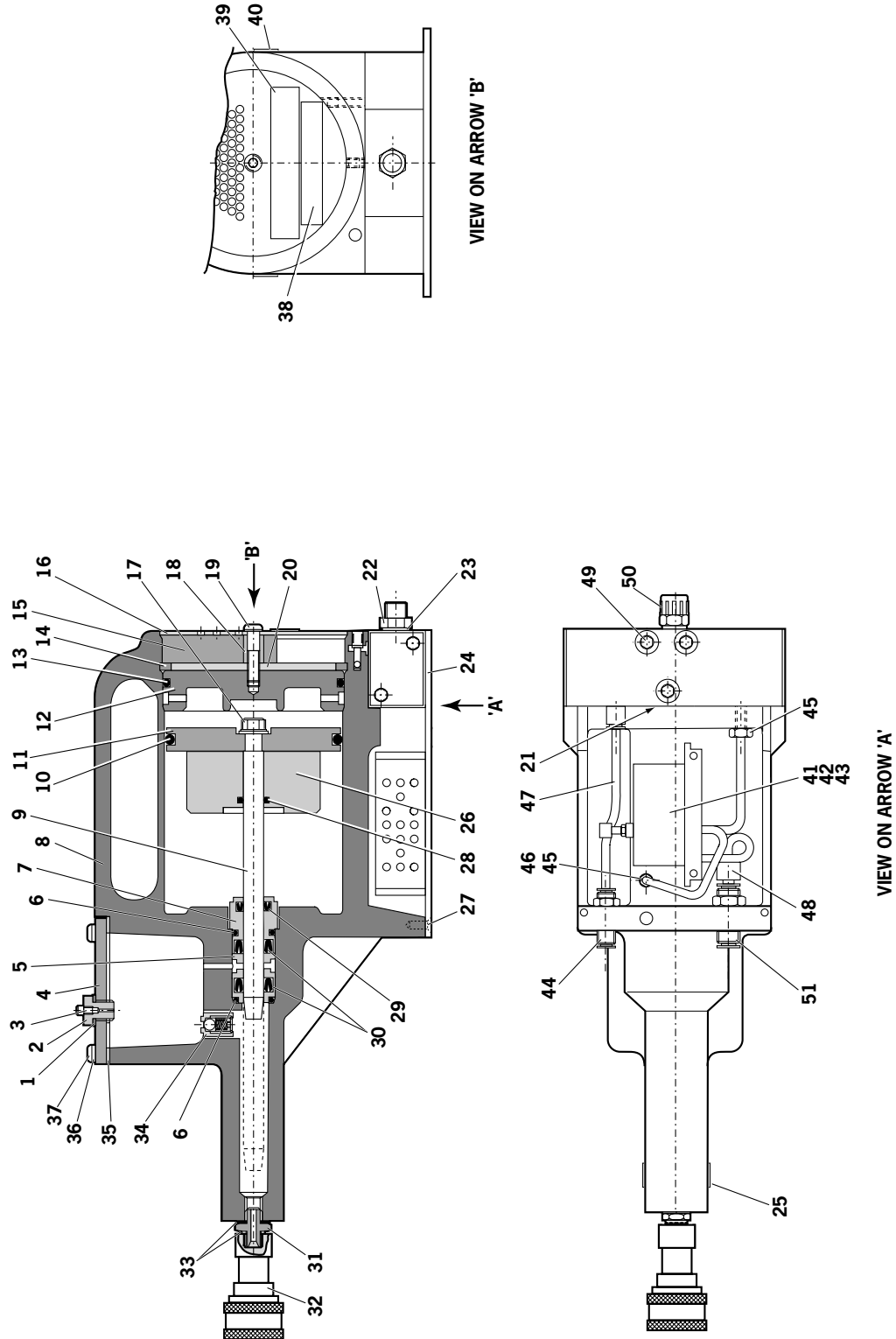
Parts List

* These are minimum recommended levels of spares based on regular servicing

| 74405-12000 PARTS LIST | | | | | | | | | |
|------------------------|-------------|----------------------------|-----|---------|------|-------------|---|-----|---------|
| ITEM | PART N° | DESCRIPTION | QTY | SPARES* | ITEM | PART N° | DESCRIPTION | QTY | SPARES* |
| 01 | 07655-09220 | CENTRE CONNECTOR | 2 | - | 28 | 74405-12001 | HANDLE - MACHINED | 1 | - |
| 02 | 07555-09219 | SPRING | 2 | - | 29 | 74405-12054 | SPACER | 1 | - |
| 03 | 74401-12046 | AIR MOTOR CASING | 1 | - | 30 | 07655-00803 | LOCKNUT | 1 | - |
| 04 | 07555-09218 | BALL | 1 | - | 31 | 07265-02011 | OIL SEAL WASHER | 1 | - |
| 05 | 74401-12047 | PUSHROD | 1 | 1 | 32 | 07265-02010 | BLEED SCREW | 1 | 1 |
| 06 | 07555-09216 | PIN | 1 | - | 33 | 74405-12027 | NOSE CASING | 1 | - |
| 07 | 07555-09213 | ROTOR BLADE | 5 | 5 | 34 | 07265-03023 | TRIGGER | 1 | - |
| 08 | 07555-09210 | FRONT END PLATE | 1 | - | 35 | 07265-03022 | LOCK NUT | 1 | - |
| 09 | 07555-09206 | BEARING | 1 | - | 36 | 07555-00502 | O' RING | 1 | - |
| 10 | 74200-12065 | PLANET GEAR | 1 | - | 37 | 07003-00391 | O' RING | 1 | - |
| 11 | 74200-12063 | PLANET GEAR SPINDLE | 1 | - | 38 | 07005-01951 | AIR CONNECTOR 4mm | 1 | - |
| 12 | 74405-12003 | STROKE ADJUSTMENT LOCK NUT | 1 | - | 39 | 74401-12008 | SLEEVE | 1 | - |
| 13 | 74401-12025 | SPRING | 1 | - | 40 | 74405-12057 | AUXILIARY SPIN OFF BUTTON | 1 | - |
| 14 | 74200-12061 | CIRCLIP | 1 | 1 | 41 | 74401-12002 | SCREW | 2 | - |
| 15 | 74200-12062 | BEARING | 1 | - | 42 | 07003-00273 | LIP SEAL | 1 | 1 |
| 16 | 07555-09208 | PLANET | 3 | - | 43 | 74200-12044 | SPINDLE | 1 | - |
| 17 | 74200-12066 | SPACER | 1 | - | 44 | 74200-12092 | ADAPTOR NUT | 1 | - |
| 18 | 07555-09211 | STATOR | 1 | - | 45 | 07003-00342 | O' RING | 1 | - |
| 19 | 74200-12070 | ROTOR | 1 | - | 46 | 71213-02022 | BEARING TAPE | 1 | - |
| 20 | 07555-09214 | REAR END PLATE | 1 | - | 47 | 74405-12002 | ADJUSTMENT RING | 1 | - |
| 21 | 07555-09215 | BEARING | 1 | - | 48 | 74405-12004 | PROTECTIVE COVER | 1 | - |
| 22 | 74405-12021 | MOVEMENT PIVOT | 1 | - | 49 | 74405-12030 | AIR MOTOR ASSEMBLY | 1 | - |
| 23 | 74200-12055 | SHIM ADJUSTMENT RING | 1 | 1 | 50 | 71213-02021 | BEARING TAPE | 1 | - |
| 24 | 74405-12020 | PISTON | 1 | - | 51 | 07003-00028 | FRICTION RING | 1 | - |
| 25 | 07003-00341 | LIP SEAL | 1 | - | 52 | 74405-12061 | AIR MOTOR GUIDE | 1 | - |
| 26 | 07265-02005 | CIRCLIP | 1 | - | 53 | 07008-00444 | FLEXIBLE HOSE ASSEMBLY (REFERENCE ONLY) | 1 | - |
| 27 | 07265-03021 | SUSPENSION RING | 1 | - | 54 | 74405-12056 | BUTTON LOCATOR | 1 | - |

Intensifier 74404-02000

General Assembly



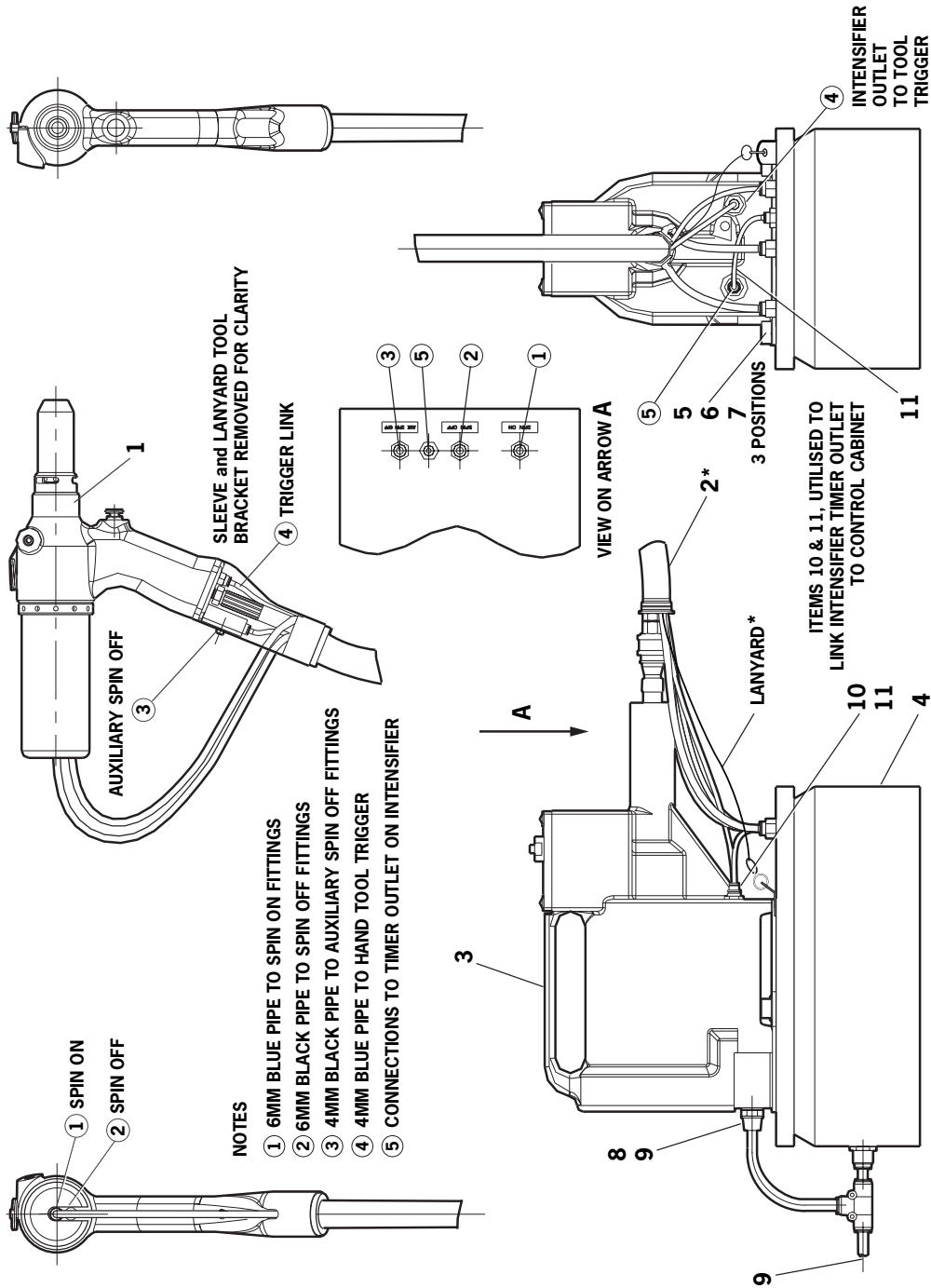
Intensifier 74404-02000

Parts List

| 74404-02000 PARTS LIST | | | | | | | | | |
|------------------------|-------------|--------------------------|-----|--------|------|-------------|---------------------------|-----|--------|
| ITEM | PART N° | DESCRIPTION | QTY | SPARES | ITEM | PART N° | DESCRIPTION | QTY | SPARES |
| 1 | 07003-00037 | 1/4" BSP DOWTY SEAL | 1 | 1 | 27 | 07001-00396 | M4 SCREW COUNTERSUNK | 4 | - |
| 2 | 07240-00211 | FILLER SCREW | 1 | - | 28 | 07008-00181 | 'O' RING | 1 | - |
| 3 | 07001-00418 | M4 BLEED SCREW SOCKET HD | 1 | 1 | 29 | 07003-00337 | LIP SEAL | 1 | 1 |
| 4 | 07240-00210 | COVER PLATE | 1 | - | 30 | 07003-00336 | LIP SEAL | 2 | 2 |
| 5 | 71420-02006 | SEAL HOUSING | 1 | - | 31 | 07005-00406 | CONNECTOR | 1 | - |
| 6 | 07003-00153 | 'O' RING | 2 | - | 32 | 07005-00759 | QUICK RELEASE CONNECTOR | 1 | - |
| 7 | 71420-02007 | SEAL PLUG | 1 | - | 33 | 07003-00142 | BONDED SEAL | 2 | 1 |
| 8 | 71420-02300 | BODY ASSEMBLY | 1 | - | 34 | 07240-00400 | VALVE HOUSING ASSEMBLY | 1 | - |
| 9 | 71420-02008 | PISTON ROD | 1 | - | 35 | 07240-00209 | GASKET | 1 | 1 |
| 10 | 07003-00182 | 'O' RING | 1 | 1 | 36 | 07002-00073 | WASHER | 4 | 1 |
| 11 | 07240-00206 | AIR PISTON | 1 | - | 37 | 07001-00554 | 10-24 UNC SCREW BUTTON HD | 4 | 1 |
| 12 | 07240-00207 | END COVER | 1 | - | 38 | 07007-01504 | CE LABEL | 1 | - |
| 13 | 07003-00183 | 'O' RING | 1 | 1 | 39 | 07240-00217 | LABEL | 1 | - |
| 14 | 07004-00069 | RETAINING RING | 1 | 1 | 40 | 74404-02010 | LABEL | 2 | - |
| 15 | 07240-00213 | FOAM SILENCER | 1 | 1 | 41 | 07005-01976 | TIMING VALVE | 1 | - |
| 16 | 07240-00214 | SILENCER COVER | 1 | - | 42 | 07001-00248 | M4 SCREW COUNTERSUNK | 2 | - |
| 17 | 07002-00017 | NUT | 1 | 1 | 43 | 07002-00123 | M4 NUT | 2 | 1 |
| 18 | 07240-00215 | SPACER | 1 | - | 44 | 07005-01431 | BULKHEAD CONNECTOR | 1 | 1 |
| 19 | 07001-00417 | M6 SCREW BUTTON HEAD | 1 | 1 | 45 | 07005-00456 | MALE HOSE CONNECTOR | 2 | - |
| 20 | 07240-00216 | RETAINING PLATE | 1 | - | 46 | 07005-00591 | 3mm BLACK TUBE A/R | - | - |
| 21 | 07005-01524 | VALVE | 1 | - | 47 | 07005-01084 | 4mm BLACK TUBE (110mm) | - | - |
| 22 | 07005-00041 | INLET CONNECTOR | 1 | - | 48 | 07005-01977 | CONNECTOR/REDUCING VALVE | 1 | - |
| 23 | 07003-00065 | SEALING WASHER | 1 | - | 49 | 07001-00176 | M6 SCREW CAP HEAD | 3 | - |
| 24 | 07240-00220 | PROTECTION PLATE | 1 | - | 50 | 07007-00292 | 1/4" BSP REDCAP | 1 | - |
| 25 | 07007-01503 | BOOK MARK LABEL | 1 | - | 51 | 07005-00855 | BULKHEAD UNION | 1 | - |
| 26 | 74404-02001 | AIR PISTON SPACER | 1 | - | | | | | |

Hand Tool 74405-01000

General Assembly and Parts List



74405-01000 PARTS LIST

| ITEM | PART N° | DESCRIPTION | QTY | SPARES | ITEM | PART N° | DESCRIPTION | QTY | SPARES |
|------|-------------|---------------------------|-----|--------|------|-------------|-------------------------|-----|--------|
| 1 | 74405-12000 | THREADED INSERT HAND TOOL | 1 | - | 7 | 07002-00105 | M8 WASHER | 3 | - |
| 2 | 07008-00444 | FLEXIBLE HOSE ASSEMBLY | 1 | - | 8 | 07005-10072 | 8MM TUBING x 2.5M | 2 | - |
| 3 | 74404-02000 | INTENSIFIER | 1 | - | 9 | 07005-01573 | MALE CONNECTOR 8MM TUBE | 2 | - |
| 4 | 07007-02065 | CONTROL SYSTEM | 1 | - | 10 | 07005-01977 | 6MM TO 4MM REDUCER | 1 | - |
| 5 | 74405-12080 | MODIFIED M8 NUTSERT® | 9 | - | 11 | 07005-01084 | BLACK PLASTIC PIPE 4MM | 1 | - |
| 6 | 07001-00469 | M8x15 SOCKET CAP HD SCREW | 3 | - | 12 | 07007-01424 | TIE WRAP | 1 | - |